

## 5. References

- [1] B. Alonso, G. Ercilla, Small turbidite systems in a complex tectonic setting (SW Mediterranean Sea): morphology and growth patterns, *Mar Petrol Geol* 19, 1225-1240, 2003
- [2] M. Garcia, B. Alonso, G. Ercilla, E. Gràcia, The tributary systems of the Almería Canyon (Alboran Sea, SW Mediterranean): Sedimentary architecture, *Mar Geol* 226, 207-223, 2006

- [3] E. Gràcia, R. Pallàs, J.I. Soto, M. Comas, X. Moreno, E. Masana, P. Santanach, S. Díez, M. García, J.J. Dañobeitia, Active faulting offshore SE Spain (Alboran Sea): Implications for earthquake hazard assessment in the Southern Iberian Margin, *Earth Planet. Sc. Lett.* 241, 734-749, 2006.

- [4] S. Duggen, K. Hoernle, H. van de Bogaard, Magmatic evolution of the Alboran region: the role of subduction in forming the western Mediterranean and causing the Messinian Salinity Crisis, *Earth Planet. Sc. Lett.*, 218, 91-108, 2004

# APPLICATION OF HIGH-RESOLUTION SEISMO-ACOUSTIC METHODOLOGIES IN THE STUDY OF THE SEAGRASS *POSIDONIA OCEANICA* (L.) DELILE

C. Lo Iacono (1), M.Á. Mateo (2), L. Guasch (3), E. Gràcia (1), P. Rodríguez (1), J.J. Dañobeitia (1), R. Carbonell (3)

1 UTM, Unitat de Tecnologia Marina - CSIC, Centre Mediterrani d'Investigacions Marines i Ambientals, Pg. Marítim de la Barceloneta 37-49, 08003 Barcelona, Spain

e-mail: loiacono@cmima.csic.es

2 CEAB, Centre d'Estudis Avançats de Blanes - CSIC, 17300 Blanes, Girona, Spain

3 IJA, Institut De Ciències De La Terra Jaume Almera - CSIC, 08028 Barcelona, Spain

## 1. Introduction

The distribution of the Mediterranean seagrass *Posidonia oceanica* has been widely assessed using acoustic methodologies. However, informations on *P. oceanica* internal structure obtained with seismic methods are still very rare. In the framework of the multidisciplinary project CARBOMED (Proyecto Intramural de Frontera, PIF-2005, CSIC, Ref. 200530F0232), a seismo-acoustic survey was carried out in Port Lligat Bay (Catalonia, NE Spain) with the aim to assess the volume potentially occupied by *P. oceanica* organic deposits (known as "matte"), detect its internal structure and highlight the morphological and sedimentological characters of the study area (Fig. 1). A first calculation of the potential volume of *P. oceanica* deposits in Port Lligat Bay was estimated in about 175.000 m<sup>3</sup> [1].



**Figure 1: Navigation tracks of the seismo-acoustic records acquired in Port Lligat Bay during the Carbomed Project. Track in red: profile 71 (Fig. 2). Track in yellow: profile 8 (Fig. 3). Red dot: core site**

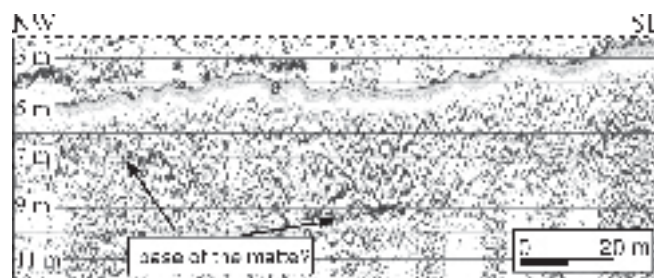
## 2. Data and Methods

The high resolution parametric echosounder "Innomar SES 2000 compact" was used to acquire 75 seismo-acoustic records spaced from 5 to 40 m each others, for a total length of about 7.5 km. The positioning system was a differential GPS (DGPS) Trimble AGP 132. The echosounder was characterized by a primary frequency of 100 kHz and secondary frequency ranging from 5 to 12 kHz. Pulse Repetition Rate was up to 30/sec and the beamwidth of  $\pm 1.8^\circ$ . Each seismo-acoustic record has been acquired twice, using secondary frequencies of

10 and 6 kHz. The lower secondary frequency (6 kHz) gave the best result because of its higher resolution and relatively higher penetration, and the records obtained with this configuration were used for this study. The shallow water of the study area (depth from 3 to 6 m) produced high amplitude multiples.

## 3. Results and discussion

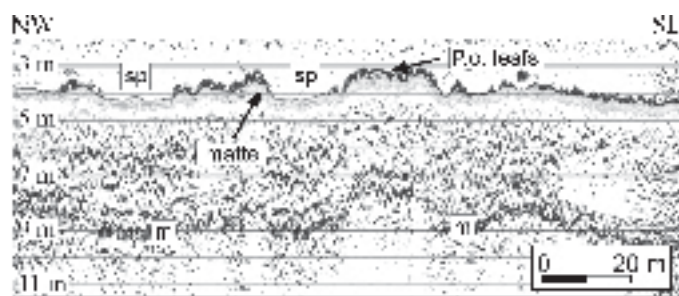
Here we present an interpretation of seismo-acoustic records and of data from a core collected in the matte of Port Lligat bay with the final aim of reconstruct the dynamics of *P. oceanica* since it was established in the study area. The acoustic masking of the internal structure of the seagrass and the presence of multiple reflectors due to the reduced depth of the area (maximum 4 m) did not allowed to associate a specific seismo-acoustic facies to the matte of *P. oceanica*. Nevertheless, in some sectors it was possible to detect a strong reflector, from 2 to 6 m depth, that was interpreted as the initial substratum where the seagrass established for first time (Fig. 2). Also, sporadic sandy areas, apparently no more than 4 m thick, were identified interlayered with the *P. oceanica* matte (Fig. 3).



**Figure 2: Seismo-acoustic record N.º 71 showing the potential base of the matte, on which *P. oceanica* established.**

A core collected on the *P. oceanica* meadow showed the presence of a dense matte for the first tens of centimeters downcore, degrading to sandy sediments with rhizomes and leaf sheaths for a total depth of 6 m. The base of the core presented gravely bioclastic sediments and its depth correlates, in a seismic record near the core location, to the reflector interpreted as the base of the *P. oceanica* matte. Assuming a growth rate of *P. oceanica* of 1.3 to 4.1 mm y<sup>-1</sup> [2,3], the gravel deposits observed at the base of the core may be aged between ca. 1500 and 4500 yrs BP.





**Figure 3: Seismo-acoustic record N.º 8 showing the different seismic facies recognized in the area. P.o: Posidonia oceanica; sp: sand patches; m: multiple**

#### 4. Conclusions

The application of seismo-acoustic methodologies revealed a reliable method in the study of the internal structure of *P. oceanica*. However, the dispersion and masking of the acoustic signal through the *P. oceanica* did not allow to totally detect the base of the matte. Preliminary results allow us to conclude that in Port Lligat Bay *P. oceanica* probably developed on gravelly sediments, mainly constituted by less fragmented gastropods and bivalves, and probably deposited in a very shallow coastal setting, characterized by moderate hydrodynamic energy. Given the high spatial variability of matte accretion

rates observed in the bay, the forthcoming radiocarbon dating of the bioclastic gravel deposits will be essential to relate their actual position and age with the geological moment during which the *P. oceanica* meadow established in the bay as the sea begun to invade it.

#### 5. Acknowledgements

The authors acknowledge the support of CARBOMED Project (Magnitud del sumidero de Carbono asociado a la fanerógama marina Posidonia Oceánica y potencial en Paleoeología - Proyectos Intramurales de Frontera (PIF)-2005, CSIC, Ref. 200530F0232). We thank Oscar Serrano and Laura Serrano for their support during the seismic survey. We also thank the captain of the R/V "Dolores" Ferran Crespo and the INNOMAR technician Hans Jorn Korsgaard.

#### 6. References:

- [1] L. Guasch, M.A. Mateo, C. Lo Iacono, E. Gràcia, R. Carbonell, First attempt to evaluate the size of the peat-like deposits formed by the seagrass *Posidonia Oceanica* using high resolution seismics, European Geosciences Union (EGU) General Assembly, Wien, 15 – 20 April, 2007
- [2] MA Mateo, J. Romero, M. Pérez, MM. Littler, DS. Littler, Dynamics of millenary organic deposits resulting from the growth of the Mediterranean seagrass *Posidonia oceanica*, *Estuarine Coastal and Shelf Science*, 44: 103-110, 1997
- [3] MA. Mateo, P. Renom, R. Julià, R. Michener, Carbon under the meadow, Oral presentation. 7th International Seagrass Biology Workshop. Zanzibar, Tanzania. 10-16 September, 2006.

## FIRST HIGH RESOLUTION MULTICHANNEL SEISMIC EXPERIMENT ON THE RV HESPERIDES: PROCESSING AND APPLICATION TO THE CARBONERAS FAULT ZONE OFFSHORE (ALBORAN SEA)

Ximena Moreno (1,2), Eulàlia Gràcia (1), Rafael Bartolomé (1), Eduardo Rubio (1), Abel Zahinos (1), Manuel J. R. Alpiste (1), Eulàlia Masana (2), Juanjo Dañobeitia(1) and IMPULS Team

*1 Unitat de Tecnologia Marina, Centre Mediterrani d'Investigacions Marines i Ambientals, CSIC, 08003 Barcelona, Spain*

*2 Grup de Tectònica Activa i Paleoseismologia, Facultat de Geologia, Universitat de Barcelona, 08028 Barcelona, Spain*

#### 1. Introduction

The IMPULS project is based on a multidisciplinary and integrated onshore-offshore neotectonic and paleoseismological study of the Carboneras Fault Zone (CFZ) at the SE margin of the Iberian Peninsula. Recently published marine geophysical data from the HITS 2001 cruise [1] reveals the seafloor morphology along the offshore Carboneras Fault segment as an upwarped 5-10 km wide deformation zone bounded by subvertical faults. With the purpose of studying the paleoseismological parameters of the CFZ offshore we carried out a marine cruise in 2006 onboard the RV Hespérides. The main goals were to image the internal geometry of the offshore continuation of the Carboneras Fault Zone, to estimate a Late Quaternary slip rate of the marine segments and to calculate the recurrence interval. High-resolution marine geophysical methods are crucial in paleoseismological studies because of the need to focus on the upper meters below the seafloor to accurately calculate the paleoseismological parameters of the fault during the Late Quaternary. In order to obtain the resolution required to study the vertical geometry of active faults in South Iberian Margin (e.g the Carboneras Fault) we tested a new high-resolution multi-channel seismic system onboard the RV Hespérides.

#### 2. The IMPULS 06 cruise: High-Resolution MCS experiment

During the IMPULS cruise, we implemented new technologies on board the RV Hespérides, such as a high-resolution multi-channel seismic acquisition. The source, a 10 m long airgun array, was specially designed to favor high frequencies, comprising eight guns, four Bolt, model 900LLX-T, and four Sleeve Guns I. The configuration (2x40, 2x55, 2x30 and 2x20 cubic inches) equals an array of 4.75 liters of volume. Gundalf software was used to specially design the gun array to provide with an adequate signal for the IMPULS survey. The energy peak obtained is larger than the one obtained with the classic cluster Sleeve Gun array, and the band width reaches even higher frequencies, up to 300 Hz. To trigger and synchronize the gun array, we have used the Minipulse gun controller (Hydrasystems) able to work with a total of 8 guns.

To record the high-resolution multichannel seismic data, a "GeoEel" Geometrics (USA) digital streamer was rented funded by the Acción Especial STREAMER (MEC). The streamer is 573 m long, with 300 metres of active section (6 active sections of 50 metres each). Each of the active sections is configured to form 8 channels, totalizing 48 channels separated of 6.25 m. The distance from the aft of the vessel until the first active section is of 93 m.

