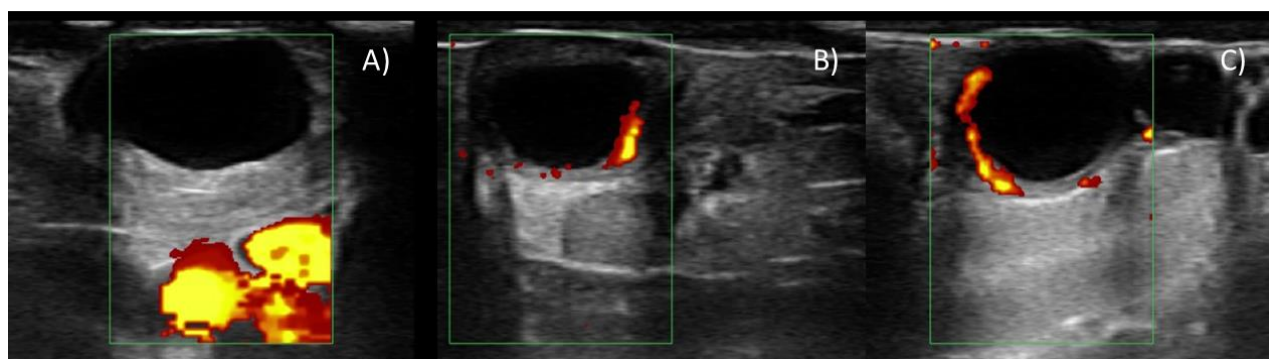


**Figure S1.** Graphic representation of the modified G6G protocol used in the study. PGF2 $\alpha$ : prostaglandin F2 $\alpha$ ; GnRH: gonadotropin releasing hormone. \*The third PGF2 $\alpha$  was not administered to all animals due to management farm routine. Source: Prepared by the authors.



**Figure S2.** Evolution of the blood flow to the preovulatory follicle at A) -30 h, B) -18 h, and C) -6 h with respect to ovulation (0 h), assessed by Power Doppler ultrasonography. Note that the Doppler signal present in A) corresponds to the blood flow in the vessels of the mesometrium.