

## Antimicrobial bioprospection among environmental bacteria in the amazon biome

V.Y.K. Sousa<sup>1</sup>, A.A. Oliveira<sup>1</sup>, J.F.O. Segovia<sup>2</sup>, M.C.A. Gonçalves<sup>3</sup>, R.M. Bezerra<sup>4</sup>, P.O.M. Junior<sup>1</sup>, R.E. Hanada<sup>5</sup>, I.C.R. Silva<sup>6</sup>, L.I.B. Kanzaki<sup>1</sup>

<sup>1</sup> Laboratory of Bioprospection, University of Brasília. <sup>2</sup> Brazilian Agricultural Research Corporation. <sup>3</sup> Amapá State University. <sup>4</sup> Federal University of Amapá. <sup>5</sup> National Institute for Research in the Amazon. <sup>6</sup> IFAR Institute of Pharmaceutical Studies

### ABSTRACT

**Introduction.** The chemical synthesis and bioengineering of new antimicrobials is not enough to face the increasing resistance of infectious microorganisms to current antimicrobial agents. Biodiversity, however, is a rich source of natural products presenting a vast array of biological activity including antibiosis between species.

**Objective.** Environmental bacteria isolated from Brazilian Amazon were assayed for the production of antimicrobial compounds.

**Materials and Methods.** Microorganisms were isolated from soil samples, fruits and seeds of Brazilian nuts collected in different regions of the Brazilian Amazon.

**Results.** The supernatant of *Burkholderia pseudomallei* and *Dermacoccus nishinomiyaenses* cultures, isolated from soil, was found to inhibit colony formation of *Staphylococcus aureus* ATCC 25923. The supernatant of *Serratia rubidaea* and *Pantoea* sp. cultures also inhibited colony growth of *Enterococcus faecalis* ATCC 29212. The supernatant of *Proteus mirabilis* colonies was found to inhibit colony formation of *Candida albicans* FIOCRUZ 40006. The metabolites obtained from the Brazilian nut microbiota, likewise *Pseudomonas aeruginosa*, *Proteus vulgaris*, *Kocuria varians*, *Granulicatella elegans*, *Staphylococcus lentus*, *Staphylococcus intermedius*, *Escherichia coli*, *Oligella ureolytica*,

*Acinetobacter* sp., and *Bacillus cereus*, inhibited colony growth of *Staphylococcus aureus* ATCC 25923.

**Conclusions.** Therefore, the metabolites of 2 species of bacteria isolated from the Amazonian soil exhibited activity against pathogenic bacteria, while metabolites of 11 species of bacteria isolated from the Brazilian nut inhibited the colony growth of both pathogenic bacteria and yeasts. Potential antimicrobial compounds found here will be chemically characterized and assayed in the future for cytotoxicity, in order to carry out further studies for prospective biotechnological purposes.

**Key words:** Antimicrobials, environmental microorganisms, bacteria, soil, Amazon

### RESUMEN

#### Bioprospección de antimicrobianos entre bacterias del ambiente en el bioma amazónico

**Introducción.** La síntesis de nuevos antimicrobianos no es suficiente para hacer frente al incremento de la farmacoresistencia de microorganismos infecciosos. La biodiversidad es rica fuente de productos que presentan amplias opciones de actividad biológica, incluyendo la antibiosis.

**Objetivo.** Bacterias aisladas del medio ambiente de la Amazonia brasileña fueron investigadas en

**Autor para correspondencia** Luís I. B. Kanzaki. Laboratory of Bioprospection, University of Brasília, University Campus Darcy Ribeiro, Asa Norte, Brasília, DF, Brazil. E-mail: kanzaki@unb.br

**Recibido:** el 21 de enero de 2013 **Aceptado para publicación:** el 14 de mayo de 2013

Este artículo está disponible en <http://www.revbiomed.uady.mx/pdf/rb132422.pdf>

Souza *et al.*

cuanto a su potencial antimicrobiano.

**Materiales y Métodos.** Microorganismos fueron aislados de muestras de suelo, frutos y semillas de nueces brasileñas (*Bertholletia excelsa*), colectadas en diferentes regiones de la Amazonia brasileña.

**Resultados.** El sobrenadante del cultivo de *Burkholderia pseudomallei* y *Demacoccus nishinomiyaensis*, aisladas del suelo, inhibieron la formación de colonias de *Staphylococcus aureus* igualmente, ATCC 25923; como también el sobrenadante del cultivo de *Serratia rubidaea* y *Pantoea* sp. inhibieron el desarrollo de colonias de *Enterococcus faecalis* ATCC 29212. También, el sobrenadante del cultivo de *Proteus mirabilis* bloqueó el crecimiento de colonias de *Candida albicans* FIOCRUZ 40006. Los metabolitos obtenidos de la microbiota de las nueces brasileñas, tales como *Pseudomonas aeruginosa*, *Proteus vulgaris*, *Kocuria varians*, *Granulicatella elegans*, *Staphylococcus lentus*, *Staphylococcus intermedius*, *Escherichia coli*, *Oligella ureolytica*, *Acinetobacter* sp. y *Bacillus cereus*, impidieron la formación de colonias de *Staphylococcus aureus* ATCC 25923.

**Conclusiones.** De esta forma, metabolitos de 2 aislados bacterianos del suelo amazónico presentaron actividad contra patógenos bacterianos; mientras que de la microbiota de la nuez brasileña, metabolitos de 11 aislados bacterianos contrarrestaron la formación de colonias de bacterias y levaduras patógenas. Compuestos con potencial actividad antimicrobiana aquí encontrados serán caracterizados químicamente y ensayados en cuanto a la actividad citotóxica, en estudios futuros con perspectivas de aplicaciones biotecnológicas.

**Palabras clave:** antimicrobianos, microorganismos ambientales, bacteria, suelo, Amazonia

## INTRODUCTION

The Amazon biome is exceptionally rich, and as a consequence is also under intense pressure from human activities. The number of disappearing living organisms remains undetermined, along

with the increasing numbers of species risking extinction. Negative effects on microorganisms are also unknown (1,2).

Antibiosis mechanisms are the fundamentals to unravel new antimicrobials, even though modern bioinformatics approaches contribute heavily to introducing new antibiotics into the world's markets. Usually, antibiotics have been derived from natural compounds produced by competing metabolic microorganism that compete for nutrients and environmental niches (3).

Soil microorganisms can play a crucial roles in plant development, producing growth factors and protections from harmful microorganisms (4,5). Similarly, skin and mucosae saprophyte microorganisms can protect vertebrate hosts against pathogenic bacteria and fungi (6). Natural sources of antibiotics include soil and plant-associated environments, or endophytic bacteria (7-9), and also lactic acid bacteria (probiotics) found in crude milk, and natural compounds found in honey (10-12). Among microorganisms producing antibiotics, *Actinomycetes* represent the most important supplier of antibiotics used in industry (13). The members of the *Bacillus* genus are known as producers of a number of antifungal compounds against phytopathogenic and human pathogenic fungi (14), and gram-positive and gram-negative bacteria (15). Another genus, the *Pseudomonas*, have been described as antibiotic synthesizing microorganisms (8, 16), as *Pseudomonas batumici* and *Pseudomonas fluorescens* Pf0-1. As a matter of fact, any fungi or bacteria can be a potential producer of antimicrobial compounds. The most successful microorganisms in the natural environment fabricate effective compounds capable of inhibiting or killing other microorganisms, in order to take advantage of nutrients, and to dominate desirable niches (17).

The chemical nature of antimicrobial compounds ranges from polyketides derivatives, small peptides, lipopeptides, 3-phenyllactic acid as also other organic acids from glucose fermentation likewise lactic and acetic acid, the main end products of probiotic metabolism, and quinolones

## Antimicrobial bioprospection in Amazon biome

(18-20). Besides antibiosis, other biological activities are displayed by microorganisms' secondary metabolites, as antineoplastic and modulators of inflammation (20,21).

The soil surface in the tropical forests, particularly in the Amazon biome, is extremely fragile, requiring constant renewal of organic compounds furnished by the rich and diverse biota, which are then washed out by intense rainfalls (22-23). Therefore, soil microbiota is heavily influenced by the organic matter that enriches the litter on the forest floor. Among the numerous botanical species of economic and ecological relevance in the Amazon, the *Bertholletia excelsa*, well-known for the production of brazil nuts, had the fruits and seeds analyzed for the microbial content in the natural environment, hanging on the tree, fallen in the soil, and stocked in warehouses. Preliminary results of microbiological analysis described the presence of a rich and diverse biota, sometimes corresponding to microorganisms found in the soil (23-24).

In the present study, we investigated the antimicrobial activity of metabolites of microorganisms isolated from soil, and brazil nuts (*Bertholletia excelsa*), collected in different areas of Amapa and Amazon state respectively, in the Amazon region of Brazil.

### MATERIALS AND METHODS

**Soil samples.** A total of 36 soil samples were collected in different areas of the Brazilian Amazon region in the Amapa state, in May 2010, from the uppermost layer of the vegetation floor, in shaded areas, in the forest floor litter, up to a maximum depth of 15 cm, with each sample weighing 1 kg, kept in clean zipped polystyrene bags at 4°C until use.

**Fruits and seeds of *Bertholletia excelsa*.** In the municipality of Manicoré, in the Amazon state, in November 2010, fruits were collected in the forest soil, and seeds were obtained from a warehouse for brazil nut (*Bertholletia excelsa*) production

(Manicoré Agricultural Cooperative/COVEMA)

### ATCC Pathogenic bacteria and Fiocruz Foundation

**Collection of microorganisms.** For assays of antibacterial activity, the following ATCC (American Type Culture Collection) pathogenic strains; *Escherichia coli* 25922, 35218, *Staphylococcus aureus* 25923, 564, *Salmonella typhimurium* 5190, *Pseudomonas aeruginosa* 27853 and *Enterococcus faecalis* 29212 were utilized. Also, microorganisms obtained from the collection of Oswaldo Cruz Institute Foundation (FIOCRUZ), *Escherichia coli* 00219; *Salmonella typhi* 0029; *Acinetobacter baumannii* 00143; *Klebsiella ozaenae* 0075; *Enterococcus faecalis* 00531 and the fungi *Candida albicans* 40006 were assayed as challenge models. The microorganisms were maintained in nutrient agar at 4°C until the assays were carried out. All samples were kindly donated by Dr. Ernesto Hofer from Oswaldo Cruz Institute Foundation, Rio de Janeiro, Brazil.

**Isolation of bacterial organisms from soil samples.** Fifty mg of each soil sample from a total of 36 samples were diluted in 9 mL of sterile distilled water and spread out in 90x15mm plates with Luria-Bertani agar, and incubated at 37 °C for 24 hours. Isolated grown colonies were transferred to 4 mL of Luria-Bertani broth and incubated under the same conditions previously stated. In order to confirm the purity of each colony, a sample aliquot of growth broth was spread out in Luria-Bertani agar plate. The supernatant samples of isolated bacteria were centrifuged for 3 min at 15,000 rpm and sterilized through a 0.22 µm syringe filter. Filtered supernatants were utilized for the biological assays. Alternatively, 1 g of each soil sample was cultured in 25 mL of thioglycolate broth in Falcon tubes for 72 hours at 37 °C, and the crude supernatants of these grown broths were utilized for the biological assays.

### Isolation of bacterial organisms from fruits and

Souza *et al.*

**seeds of *Bertolletia excelsa*.** The fruits and seeds of *Bertolletia excelsa* were separately cultured in thioglycolate broth in the same conditions as carried out for soil samples. The crude supernatants of grown organisms were utilized for the biological assays.

**Biological assays in 96 well flat bottom microtitration plates.** Preliminary screening for antibacterial activity was carried out utilizing filtered supernatants of isolated bacteria from soil samples. Also, crude supernatants of soil growth, fruits and seeds growth of *Bertolletia excelsa* were screened for antibacterial activity. Briefly, 7 ATCC bacterial strains were isolatedly inoculated in Luria-Bertani broth, (26x10<sup>3</sup> UFC/mL). Each horizontal row, with 12 wells each, was divided in 3 groups (4 wells per group), composed of 2 controls, a positive and negative one, and a test sample. The first group contained 10 µL of ATCC strain + 90µL de Luria-Bertani broth. The second one, 40 µL of filtered bacterial supernatant + 50 µL of Luria-Bertani broth + 10 µL of ATCC strain, and the third one (negative control), 50 µL of Luria-Bertani broth + 50 µL of filtered bacterial supernatant. The plates were incubated for 24 hs at 37°C. In order to detect antibacterial activity against ATCC strains, the plates were read in a spectrophotometer at 630 nm (THERMO PLATE, ELISA Tp Reader).

**Disc diffusion test in agar for bacterial supernatants.** Ten microliters of filtered supernatant, of each bacterial growth from 90 isolated soil bacterial organisms, was dropped onto a 6 mm Whatman filter disc and allowed to dry. Sequentially, the discs were evenly placed over a 140x15mm petri dish containing 100 mL Müeller-Hinton agar previously inoculated with the ATCC bacterial strains individually (1x10<sup>-3</sup> UFC/mL), utilizing glass pearls to spread the bacterial inoculum homogeneously. All procedures were carried out in triplicate, under aseptic conditions in a laminar flow prep area. The antibacterial activity was checked out by the development of

an inhibition halo around the discs and controlled by filter disc containing ciprofloxacin and distilled water.

**Identification of microorganisms exhibiting antimicrobial activity.** Crude supernatants obtained from mixed bacterial growth exhibiting antimicrobial activity, also showed small colonies in the border of the cavity (surrounded by inhibition halo). These bacterial colonies were picked up and cultured in broth medium, and the filtered supernatant was again tested for antimicrobial activity. Pure bacterial colonies were identified by manual and automated methods (VITEK 2 automated identification system) utilizing the Biomerieux phenotypic identification kit.

## RESULTS

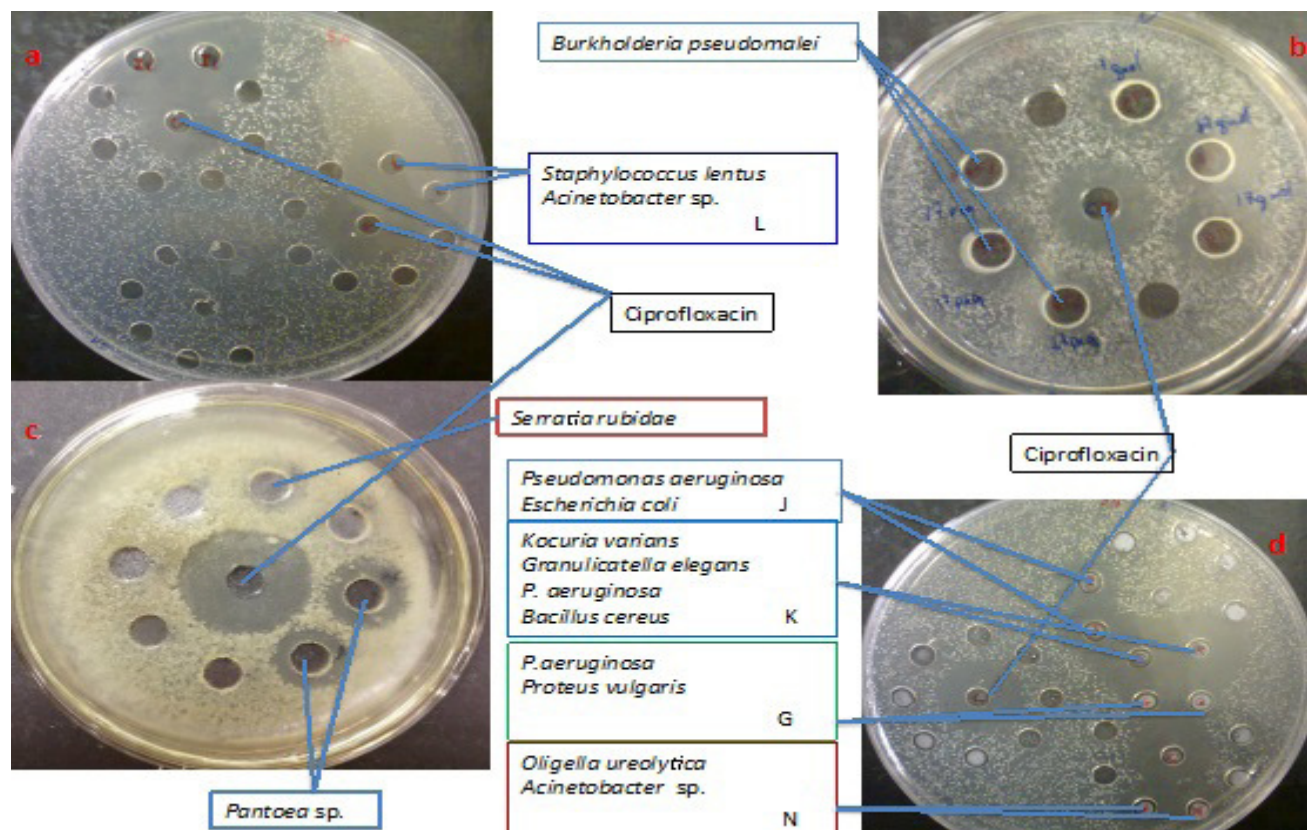
Fruits and seeds of *Bertolletia excelsa*, the brazil nut, plus the following isolated microorganisms; *Pseudomonas aeruginosa*, *Proteus vulgaris*, *Escherichia coli*, *Kocuria varians*, *Granulicatella elegans*, *Staphylococcus lentus*, *Staphylococcus intermedius*, *Oligella ureolytica*, *Bacillus cereus* and *Acinetobacter* sp., produced metabolites presenting inhibitory activity against *Staphylococcus aureus* ATCC 25923 (**Figure 1a** and **1d**).

Of 36 soil samples collected in different geographical locations in the Amapa state, Brazil, *Burkholderia pseudomallei*, *Dermacoccus nishinomiyaenses*, *Proteus mirabilis*, *Pantoea* sp. and *Serratia rubidae* were isolated. The metabolites produced by *Burkholderia pseudomallei* and *Dermacoccus nishinomiyaenses* inhibited the growth of *Staphylococcus aureus* ATCC strain 25923 (**Figure 1b**). The supernatant of *Proteus mirabilis* cultures exhibited antimicrobial activity against *Candida albicans* colony growth (figure not shown), while growth supernatant of *Serratia rubidae* and *Pantoea* sp. inhibited colony growth of *Enterococcus faecalis* ATCC 29212 (**Figure 1c**). The supernatant of *Pantoea* sp. cultures inhibited colony formation of *Enterococcus faecalis* ATCC 29212 (**Figure 1c**).

## Antimicrobial bioprospection in Amazon biome

The initial assays here, did not utilize microorganisms growing in groups, but came from isolated Whatman paper discs impregnated with filtered supernatant of isolated microorganisms that were preliminarily utilized for antimicrobial screening. Through this approach, antimicrobial

The antimicrobial activity demonstrated by the crude growth supernatant of mixed bacterial populations, and also of growth supernatant of isolated bacteria, in agar plates, visually inspected for halo inhibition development, was confirmed by turbidity reduction, in 96 well plate, measured



**Figure 1. (a) Crude mixed filtered supernatant of bacterial growth (*Staphylococcus lentus* & *Acinetobacter* sp.) exhibiting antimicrobial activity against *Staphylococcus aureus* ATCC 25923. (b) *Staphylococcus aureus* ATCC 25923 colony growth inhibition by filtered growth supernatant of *Burkholderia pseudomallei*. (c) Filtered growth supernatant of *Serratia rubidaea* and *Pantoea* sp. exhibiting antimicrobial activity against *Enterococcus faecalis* ATCC 29212 colony growth. (d) Crude growth supernatant of bacterial isolates (*Pseudomonas aeruginosa*, *Escherichia coli*, *Kocuria varians*, *Granulicatella elegans*, *Bacillus cereus*, *Proteus vulgaris*, *Oligella ureolytica* and *Acinetobacter* sp.) from seeds and fruits of brazilian nut exhibiting activity against *Staphylococcus aureus* ATCC 25923 colony growth.**

activity was not detected, unless the unfiltered supernatant applied to the cavities in the agar plate were of mixed culture of different bacteria. It is remarkably clear that different microorganisms sharing the same microenvironment will compete for nutrients and space in order to survive and reproduce. In this way, secondary metabolites would be secreted by competing microorganisms inhibiting the growth of other microorganisms.

using a ELISA reader spectrophotometer at 630 nm. The optical density values were usually reduced twofold in bacterial growth of pathogenic microorganisms exposed to filtered supernatants of mixed and isolated microorganisms of soil and seeds/fruits of brazilian nut (Table 1).

## DISCUSSION

Members of the Enterobacteriaceae family

**Table 1**  
**Median optical density values of growth culture medium of pathogenic bacteria challenged with filtered supernatant of bacterial isolates from soil, seeds and fruits of *Bertholletia excelsa***

Bacterial filtered growth supernatant of <i>B. excelsa</i> and soil	Optical Density (630 nm)	
	Control Group	Test Group (filtered bacterial supernatant)
G. Group	618.5±64.9 <sup>a</sup>	367.75±39.9 <sup>b</sup>
Isolate G1	589.25±110.7 <sup>a</sup>	203.5±18.4 <sup>b</sup>
Isolate I1	584.75±160.3 <sup>a</sup>	218.5±8.7 <sup>b</sup>
J Group	548±189.1 <sup>a</sup>	382.75±59.6 <sup>a</sup>
K Group	571.5±162.3 <sup>a</sup>	229±27.6 <sup>a</sup>
L Group	619.5±183.6 <sup>a</sup>	269.75±16.2 <sup>a</sup>
N Group	610.75±179.9 <sup>a</sup>	381.25±64.2 <sup>a</sup>
Isolate 17	687.5±111.3 <sup>a</sup>	412.75±10.5 <sup>a</sup>

have also been reported by other authors producing colicins, pyocins and proticins by *Escherichia coli*, *Pseudomonas aeruginosa* and *Proteus vulgaris* respectively (25, 26, 27). Many other bacteriocins have been reported, as variacin produced by *Kocuria varians* and arginine deaminase like enzyme synthesized by *Granulicatella elegans* (28, 29). The gram-positive cocci, *Staphylococcus lentus* and *Staphylococcus intermedius*, constitute the physiologic skin microbiota of many mammals including ruminants, carnivores and birds (30), despite the pathogenic potential of these microorganisms (31,32). There are no reports in the literature concerning the production of antimicrobials by *Staphylococcus lentus* and *Staphylococcus intermedius*; nevertheless the polyketide synthase gene was detected in *Staphylococcus lentus* isolated from South China Sea sponges (33).

Despite the *Burkholderia* genus's known propensity for producing agents that are pathogenic to plants, animals and humans, there are also beneficial species in this group likewise *B. vietnamiensis*, *B. unamae*, and *B. tropica*, associated to plants, carrying out nitrogen fixation and promoting plant growth. Here, the antibacterial

activity of *Burkholderia pseudomallei* against *S. aureus* could be explained by the exceptional versatility and capacity of the *Burkholderia* genus to produce diverse antimicrobial secondary metabolites, besides toxins, like extracellular enzymes and siderophores as reviewed by Vial *et al.* (34).

*Proteus mirabilis*, a gram-negative bacteria, member of the Enterobacteriaceae family, is the second commonest cause, after *Escherichia coli*, of urinary tract infections (35). This organism is found in the human and animals' intestine, and also in polluted soils and water. Probably, the growth inhibition of *Candida albicans* by the growth supernatant of *Proteus mirabilis* occurred due to ammonia production by this microorganism that alkalize the microenvironment (25).

*Pantoea* species can be isolated from environmental sources, in soil, water and vertebrates, including man. The extensive number of this genus makes the identification cumbersome (36). There are reports, in the literature, about *Pantoea agglomerans* involved in esophageal reflux, in man (37). Nevertheless, other members of this genus render beneficial effects in biotechnology. It was observed the inhibitory activity of *Pantoea agglomerans* over the phytopathogenic fungi *Fusarium graminearum* (38).

The opportunistic pathogen *Serratia rubidae* is rarely isolated from human tissues, but it has been reported in the respiratory tract, wounds, fecal samples, bile and blood, usually in immunocompromised patients (39).

Therefore, the metabolites of 2 species of bacteria isolated from the Amazonian soil exhibited activity against pathogenic bacteria, while metabolites of 11 species of bacteria isolated from the Brazilian nut inhibited the colony growth of pathogenic bacteria and yeast.

The results obtained here warrant further studies to identify and characterize the compounds yielding antimicrobial activity. The biotechnological interest in these substances,

## Antimicrobial bioprospection in Amazon biome

probably secondary metabolites of peptidic nature, is justified by the increased demand of new antimicrobial drugs, in order to treat human and animal diseases of microbial etiology. This interest is emphasized by the crescent multiresistance to the available antibiotics in use. Also, besides the development of new drugs to combat infectious diseases, agricultural application of competing microorganisms is a natural way to overcome phytopathogenic aggression to plants utilized by man and animals, for food production. It is worthwhile to mention the economic impact of new antimicrobials in the market.

### ACKNOWLEDGEMENTS

Part of this work was conducted under financial support of the Brazilian National Treasure Resources (Tesouro Nacional), Banco da Amazônia and University of Brasilia. All the authors declare that there is not conflict of interests.

### REFERENCIAS

1. **Mayle FE & Power MJ.** Impact of a drier Early-Mid-Holocene climate upon Amazonian forests. *Philos Trans R Soc Lond B Biol Sci.* 2008 May; 363:1829-1838.
2. **Butchart SH, Walpole M, Collen B, van Strien A, Scharlemann JP, Almond RE et al.** Global biodiversity: indicators of recent declines. *Science.* 2010 May; 328(5982):1164-8.
3. **Kalia YN, Perozzo R, Scapozza L.** The pharmaceutical biochemistry group: where pharmaceutical chemistry meets biology and drug delivery. *Chimia (Aarau).* 2012 May; 66(5):313-9.
4. **Paz IC, Santin RC, Guimarães AM, Rosa OP, Dias AC, Quecine MC, Azevedo JL, Matsumura AT.** Eucalyptus growth promotion by endophytic *Bacillus* spp. *Genet Mol Res.* 2012 Oct; 11(4): 3711-20.
5. **Scharf DH, Brakhage AA.** Engineering fungal secondary metabolism: A roadmap to novel compounds. *J Biotechnol.* 2013 Jan; 163(2):179-83.
6. **Sang Y & Blecha F.** Antimicrobial peptides and bacteriocins: alternatives to traditional antibiotics. *Anim Health Res Rev.* 2008 Dec; 9(2):227-35.
7. **Raaijmakers JM & Mazzola M.** Diversity and natural functions of antibiotics produced by beneficial and plant pathogenic bacteria. *Annu Rev Phytopathol.* 2012 Jun; 50:403-24.
8. **Kiprianova EA, Klochko VV, Zelena LB, Churkina LN, Avdeeva LV.** *Pseudomonas batumici* sp. nov., the antibiotic-producing bacteria isolated from soil of the Caucasus Black Sea coast. *Mikrobiol Z.* 2011 Sep-Oct; 73(5):3-8.
9. **Qin S, Xing K, Jiang JH, Xu LH, Li WJ.** Biodiversity, bioactive natural products and biotechnological potential of plant-associated endophytic actinobacteria. *Appl Microbiol Biotechnol.* 2011 Feb; 89(3):457-73.
10. **Stoianova LG, Ustiugova EA, Netrusov AI.** Antibacterial metabolites of lactic acid bacteria: their diversity and properties. *Prikl Biokhim Mikrobiol.* 2012 May-Jun; 48(3):259-75.
11. **Mu W, Yu S, Zhu L, Zhang T, Jiang B.** Recent research on 3-phenyllactic acid, a broad-spectrum antimicrobial compound. *Appl Microbiol Biotechnol.* 2012 Sep; 95(5):1155-63.
12. **Tejero-Sariñena S, Barlow J, Costabile A, Gibson GR, Rowland I.** In vitro evaluation of the antimicrobial activity of a range of probiotics against pathogens: Evidence for the effects of organic acids. *Anaerobe.* 2012 Oct; 18(5):530-8.
13. **Tiwari K & Gupta RK.** Diversity and isolation of rare actinomycetes: an overview. *Crit Rev Microbiol.* 2012 Aug doi:10.3109/1040841X.2012.709819.
14. **Chen N, Jin M, Qu HM, Chen ZQ, Chen ZL, Qiu ZG, Wang XW, Li JW.** Isolation and characterization of *Bacillus* sp. producing broad-spectrum antibiotics against human and plant pathogenic fungi. *J Microbiol Biotechnol.* 2012 Feb; 22(2):256-63.
15. **Ansari A, Aman A, Siddiqui NN, Iqbal S, Ali ul Qader S.** Bacteriocin (BAC-IB17): screening, isolation and production from *Bacillus subtilis* KIBGE IB-17. *Pak J Pharm Sci.* 2012 Jan; 25(1):195-201.
16. **Garbeva P, Tyc O, Remus-Emsermann MN, van der Wal A, Vos M, Silby M, de Boer W.** No apparent costs for facultative antibiotic production by the soil bacterium *Pseudomonas fluorescens* Pf0-1. *PLoS One.* 2011 Nov; 6(11):e27266.
17. **Nishie M, Nagao J, Sonomoto K.** Antibacterial peptides "bacteriocins": an overview of their diverse characteristics and applications. *Biocontrol Sci.* 2012 Mar; 17(1):1-16.
18. **Du J, Shao Z, Zhao H.** Engineering microbial factories for synthesis of value-added products. *J Ind Microbiol Biotechnol.* 2011 Aug; 38(8):873-90.
19. **Heeb S, Fletcher MP, Chhabra SR, Diggle SP, Williams P, Cámara M.** Quinolones: from antibiotics to autoinducers. *FEMS Microbiol Rev.* 2011 Mar; 35(2):247-74.
20. **Vijayabharathi R, Bruheim P, Andreassen T, Raja DS, Devi PB, Sathyabama S, Priyadarisini VB.** Assessment of resistomycin, as an anticancer compound isolated and characterized from *Streptomyces aurantiacus* AAA5. *J Microbiol.* 2011 Dec; 49(6):920-6.
21. **Brogden NK, Mehalick L, Fischer CL, Wertz PW, Brogden KA.** The emerging role of peptides and lipids as antimicrobial epidermal barriers

Souza *et al.*

- and modulators of local inflammation. *Skin Pharmacol Physiol.* 2012 April; 25(4):167-81.
22. **Segovia JFO, Oliveira LO, Gonçalves MCA, Resck IS, Silva CAM, Silveira D, Gavrilov AV, Gavrilova LA, Kanzaki LIB.** Botanical characterization, geographical distribution and phytochemistry analysis of *Manilkara huberi* (Ducke) Stanhl autochthonous in Amapá State, Brazil. *Proceedings of the National Academy of Sciences of Belarus/Series of Biological Sciences.* 2011 2:30-40
  23. **Martins Jr PO, Sousa VYK, Correia AF, Mata ECG, Kanzaki LIB.** Fontes de contaminação microbiana da castanha-do-pará. *Amazônia.* 2011 jan/jun; 6: 21-30
  24. **Martins Jr PO, Correia AF, Kanzaki LIB.** Contaminantes Microbianos da Castanha do Pará. In: Kanzaki LIB. *Desenvolvimento Sustentável em Áreas de Extrativismo da Castanha do Brasil no Sul do Amapá.* Belém: Banco da Amazônia; 2009. P.119-143.
  25. **Sekaninová G & Kolárová M.** Differentiation of *Proteus mirabilis* and *Proteus vulgaris* strains by means of proticine typing: a longitudinal epidemiological study. *Cent Eur J Public Health.* 1996 May; 4(2):98-101.
  26. **Budič M, Rijavec M, Petkovšek Z, Zgur-Bertok D.** *Escherichia coli* bacteriocins: antimicrobial efficacy and prevalence among isolates from patients with bacteraemia. *PLoS One.* 2011 Dec; 6(12):e28769.
  27. **Barreteau H, Bouhss A, Fourgeaud M, Mainardi JL, Touzé T, Gérard F, Blanot D, Arthur M, Mengin-Lecreulx D.** Human- and plant-pathogenic *Pseudomonas* species produce bacteriocins exhibiting colicin M-like hydrolase activity towards peptidoglycan precursors. *J Bacteriol.* 2009 Jun; 191(11):3657-64.
  28. **O'Mahony T, Rekhif N, Cavadini C, Fitzgerald GF.** The application of a fermented food ingredient containing 'variacin', a novel antimicrobial produced by *Kocuria varians*, to control the growth of *Bacillus cereus* in chilled dairy products. *J Appl Microbiol.* 2001 Jan; 90(1):106-14.
  29. **Kanamoto T, Sato S, Nakashima H, Inoue M.** Proliferation of mitogen-stimulated human peripheral blood mononuclear cells is inhibited by extracellular arginine deiminase of *Granulicatella elegans* isolated from the human mouth. *J Infect Chemother.* 2007 Oct; 13(5):353-5..
  30. **Luz Ida S.** Molecular characterization of toxins in *Staphylococcus aureus* isolated from milk and 'coalho' cheese in cities from the Agreste region of Pernambuco. *Rev Inst Med Trop Sao Paulo.* 2009 May-Jun; 51(3):177.
  31. **Aslantas O, Türkyilmaz S, Yilmaz MA, Erdem Z, Demir C.** Isolation and Molecular Characterization of Methicillin-Resistant *Staphylococci* from Horses, Personnel and Environmental Sites at an Equine Hospital in Turkey. *J Vet Med Sci.* 2012 Dec; 74(12):1583-8.
  32. **Karachalios GN, Michelis FV, Kanakis KV, Karachaliou I, Koutri R, Zacharof AK.** Splenic abscess due to *Staphylococcus lentus*: a rare entity. *Scand J Infect Dis.* 2006; 38(8):708-10.
  33. **Zhang W, Zhang F, Li Z, Miao X, Meng Q, Zhang X.** Investigation of bacteria with polyketide synthase genes and antimicrobial activity isolated from South China Sea sponges. *J Appl Microbiol.* 2009 Aug; 107(2):567-75.
  34. **Vial L, Groleau MC, Dekimpe V, Déziel E.** *Burkholderia* diversity and versatility: an inventory of the extracellular products. *J Microbiol Biotechnol.* 2007 Sep; 17(9):1407-29.
  35. **Senior BW.** The purification, structure and synthesis of proticine 3. *J Med Microbiol.* 1983 Aug; 16(3):323-31..
  36. **Brady C, Cleenwerck I, Venter S, Vancanneyt M, Swings J, Coutinho T.** Phylogeny and identification of *Pantoea* species associated with plants, humans and the natural environment based on multilocus sequence analysis (MLSA). *Syst Appl Microbiol.* 2008 Dec; 31(6-8):447-60.
  37. **Cheng A, Liu CY, Tsai HY, Hsu MS, Yang CJ, Huang YT, Liao CH, Hsueh PR.** Bacteremia caused by *Pantoea* agglomerans at a medical center in Taiwan, 2000-2010. *J Microbiol Immunol Infect.* 2012 July; doi:10.1016/j.jmii.2012.05.005.
  38. **Pandolfi V, Jorge EC, Melo CM, Albuquerque AC, Carrer H.** Gene expression profile of the plant pathogen *Fusarium graminearum* under the antagonistic effect of *Pantoea* agglomerans. *Genet Mol Res.* 2010 Jul 6;9(3):1298-311.
  39. **Sekhsokh Y, Arsalane L, El Ouenass M, Doublali T, Bajjou T, Lahlou Amine I.** *Serratia rubidaea* bacteremia. *Med Mal Infect.* 2007 May; 37(5):287-9.