

# Calibration of two mathematical models at laboratory scale for predicting the generation of methane and carbon dioxide at the entrance point of the Chucurí river to the Topocoro Reservoir, Colombia

ENVIRONMENTAL ENGINEERING

## Calibración de dos modelos matemáticos a escala de laboratorio para la predicción de la generación de los gases metano y dióxido de carbono en el punto de entrada del río Chucurí al Embalse Topocoro, Colombia

Melissa Ruiz-Vásquez<sup>1§</sup>, Diana C. Rodríguez<sup>1</sup>, Edwin L. Chica<sup>2</sup>, Gustavo A. Peñuela<sup>1</sup>

<sup>1</sup> Grupo Diagnostico y Control de la Contaminación (GDCON),  
Escuela Ambiental, Facultad de Ingeniería, Sede de Investigaciones  
Universitarias (SIU), Universidad de Antioquia (UdeA), Medellín, Colombia.

<sup>2</sup> Grupo Energías alternativas, Ingeniería Mecánica, Facultad de Ingeniería,  
Universidad de Antioquia (UdeA), Medellín, Colombia.

§ melissa.ruiz1@udea.edu.co, diana.rodriguez@udea.edu.co, edwin.chica@udea.edu.co, gustavo.penuela@udea.edu.co

(Recibido: 24 de abril 2018 – Aceptado: 13 de noviembre 2018)

### Abstract

Reservoirs emit greenhouse gases (GHGs) as a result of flooded organic matter biodegradation after the filling process or the organic matter that enters through the tributaries. Hence, it is important to take an inventory of greenhouse gas emissions in the reservoirs, so that, measures can be established to minimize the impact of global warming. These gases are produced by anaerobic or aerobic processes occurring in reservoirs. In this work, the formation rates of carbon dioxide (CO<sub>2</sub>) and methane (CH<sub>4</sub>) in anaerobic reactors in batch were evaluated at laboratory scale, using water and plant material from the Topocoro reservoir, located in the department of Santander-Colombia. The results showed degradation rates of 0.5843 mg O<sub>2</sub>/L.d and 0.1269 mg O<sub>2</sub>/L.d for dissolved and particulate organic matter respectively. Furthermore, gas emissions after completing the degradation time were 0.6269 mg CH<sub>4</sub>/L and 31.2443 mg CO<sub>2</sub>/L. It was implemented a linear model to predict the formation of CO<sub>2</sub> and an exponential model to predict the formation of CH<sub>4</sub> with determination coefficients of 0.9999 and 0.9928 respectively.

**Keywords:** Decomposition kinetics; dissolved organic matter; greenhouse gases; particulate organic matter; reservoir.

### Resumen

Los embalses emiten gases de efecto invernadero (GEI) como consecuencia de la biodegradación de la materia orgánica que queda inundada después del proceso de llenado o de la materia orgánica que ingresa por los tributarios. Es por ello, que es importante realizar un inventario de las emisiones de gases en los embalses, de tal forma que se puedan establecer medidas para minimizar el impacto del calentamiento global. Estos gases se generan por procesos anaerobios o aerobios que ocurren en los embalses. En el presente trabajo se evaluó a nivel de laboratorio la tasa de formación de los gases dióxido de carbono (CO<sub>2</sub>) y metano (CH<sub>4</sub>) en reactores anaerobios en batch, empleando agua y material vegetal proveniente del embalse Topocoro, ubicado en el departamento de Santander-Colombia. Los resultados arrojaron tasas de degradación de 0.5843 mg O<sub>2</sub>/L.d y de 0,1269 mg O<sub>2</sub>/L.d para la materia orgánica disuelta y particulada, respectivamente. Por otro lado, las emisiones de gases después de completar el tiempo de degradación fueron 0.6269 mg CH<sub>4</sub>/L y 31.2443 mg CO<sub>2</sub>/L. Para predecir la producción de los gases se implementó un modelo lineal para el CO<sub>2</sub> y un modelo exponencial para el CH<sub>4</sub> con coeficientes de determinación de 0.9928 y de 0.9999, respectivamente.

**Palabras clave:** Cinética de descomposición; gases de efecto invernadero; materia orgánica disuelta; materia orgánica particulada.

## 1. Introduction

Hydropower plants are an alternative power source<sup>(1)</sup>. However, these systems could be potential sources of greenhouse gases (GHG) due to flooded organic matter biodegradation after filling stage or entering organic matter through the tributaries<sup>(2-8)</sup>. Tropical reservoirs are estimated to emit 1.300-3.000 g CO<sub>2</sub> eq/kWh while boreal reservoirs are estimated to emit 160-250 g CO<sub>2</sub> eq/kWh. Other energy sources such as natural gas power plants, oil burning and carbon burning are estimated to emit 400-500 g CO<sub>2</sub> eq/kWh, 790-900 g CO<sub>2</sub> eq/kWh and 900-1.200 g CO<sub>2</sub> eq/kWh respectively<sup>(9)</sup>.

Organic matter biodegradation is carried out by many microorganism groups in presence or absence of oxygen. Biodegradation in absence of oxygen is called anaerobic biodegradation and it is composed by a series of processes with methane (CH<sub>4</sub>) and carbon dioxide (CO<sub>2</sub>) as final products<sup>(10-11)</sup>. These gases have a recalcitrant property in the atmosphere<sup>(12)</sup> but each one contributes with a different heating. For instance, CH<sub>4</sub> has a global warming potential (GWP) 34 times more than CO<sub>2</sub>'s GWP on a 100-year timescale but CO<sub>2</sub>'s effects in atmosphere can last hundreds of years because carbon cycles through several Earth system reservoirs have vastly different residence times<sup>(13-14)</sup>. For this reason, every nation must implement a GHG inventory which includes hydropower plants inputs in order to establish control measures<sup>(15)</sup>. On a global basis, the GHG emissions from reservoirs are equivalent to 4% and 20% of other anthropogenic emissions of CO<sub>2</sub> and CH<sub>4</sub> respectively, and 70% and 90% of these emissions (from CO<sub>2</sub> and CH<sub>4</sub> respectively) proceed from tropical reservoirs<sup>(8)</sup>.

An action taken for GHG studies is the development of mathematical models to predict the formation and behavior of these gases during reservoir's useful lifetime, for possible goals to decrease atmosphere emissions. Different studies have been developed to appraise predicting GHG formation models<sup>(16-19)</sup>. Considering that GHG formation in reservoirs is given by organic matter biodegradation, most of the models are conceptually conceived according to biodegradation rates, hence it is important to consider the decomposition kinetics<sup>(20)</sup>.

In this contribution, it was studied the GHG formation rate in Topocoro reservoir located in Santander, Colombia, according to kinetic anaerobic biodegradation of organic matter in water and vegetal samples from the reservoir, throughout laboratory tests with batch reactors, in which production of CO<sub>2</sub> and CH<sub>4</sub> was quantified. It was performed a linear mathematical model to predict CO<sub>2</sub> formation and an exponential mathematical model to predict CH<sub>4</sub> formation. Finally, the measuring data adjustment to resulting data after implementing mathematical models in Matlab was evaluated.

## 2. Materials and methods

### 2.1 Study area

The study of the behavior of GHG generation from the Topocoro reservoir in Sogamoso hydroelectric dam was contemplated in this contribution. It is located in Southamerica, in Northwest Colombia (7° 6' 11.57" N, 73° 24' 37.09" O), on Santander department, at the canyon where Sogamoso River crosses the Serranía de la Paz<sup>(21)</sup>, 75 km upstream of its river outlet in Magdalena river and 62 km downstream of the Suarez and Chicamocha rivers confluence. The reservoir uses the Sogamoso river in the generation of electric energy through the construction of a 190 m high dam and an underground powerhouse. It has 820 MW of installed capacity and a mean annual generation of 5.056 GWh/year. The filling volume is 8.5 million m<sup>3</sup>, its mean flow is 474.6 m<sup>3</sup>/s and the surface area of the water mirror is 6960 ha. Currently, it is the fourth dam in Colombia with the biggest installed capacity<sup>(22)</sup>. The tributaries of the reservoir are summarized in Table 1.

**Table 1.** Tributaries of Topocoro reservoir. Adapted from (22)

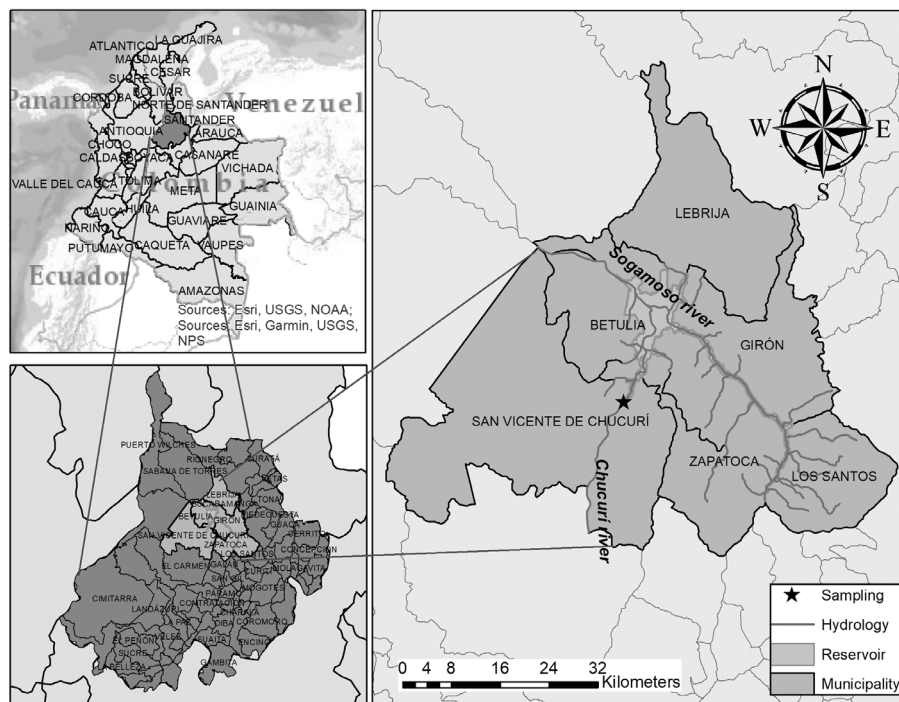
Tributary	Multiyear discharge (m/s)	Basin area (ha)	Precipitation (mm/d)
Chicamocha	135.0	133,200	2.59
Suárez	195.0	982,300	6.38
Chucurí	8.7	-	4.97
Aguas blancas	0.88	-	4.46
Sogamoso	540.0	111.944	7.90

The area of influence of the project is shown in Figure 1. Particularly, this study is focused on GHG generation at the point where Chucurí river enters to the reservoir. This river is one of the most important tributaries in terms of organic matter contribution because it takes all the wastewaters from the municipality of San Vicente de Chucurí, as it does not count with a wastewater treatment plant, and finally that organic matter goes into the reservoir contributing to the total emission of GHG from Topocoro.

## 2.2 Sampling

The water sampling was made on September 11<sup>th</sup>, 2015, during the post-filling reservoir stage in the dry-to-wet transition season. It was chosen this seasonality so that rainfalls were not abundant enough to generate aeration processes in water due to flow increase that could affect the strict anaerobic bacteria responsible for CH<sub>4</sub> generation, nor organic matter dilution processes as a consequence of water volume increasing.

Figure 1. Topocoro reservoir area



Water samples were collected from the aphotic zone at the point where Chucurí River enters to Topocoro reservoir. For this purpose, it was used a Kemmerer bottle which was submerged at 0.7 m depth. This distance was calculated with the Secchi disk at the point it was no longer visible from the surface. 20 L of water at this depth were collected with the Kemmerer bottle and were transferred to plastic containers, previously purged with the same reservoir water. The sampling process and the subsequent transport to the laboratory were carried out according to GDCON sampling protocol (GE-PR-004-GDCON) based on

the 1060 Collection and preservation of samples from the 22<sup>nd</sup> Edition of Standard methods for the examination of water and wastewater<sup>(23)</sup>.

Additionally, in order to evaluate organic matter biodegradation by microorganisms in the reservoir, a pickup of Puyol grass from *Cynodon* genus, a representative unit of land cover in the study area<sup>(21)</sup>, was performed in the reservoir surrounding area during the same day of the water sampling. These grass samples were preserved with alcohol and paper during its transport to the laboratory.

### 2.3 Experimental setup

The experimental setup lied in analyzing particulate and dissolved organic matter degradation kinetics by anaerobic microorganisms from the reservoir's water. According to <sup>(21)</sup> the water samples were bubbled with Nitrogen gas so the dissolved oxygen in the column was displaced, making sure that water conditions were anaerobic, after moving the samples from the reservoir to the laboratory. Subsequently, the experimental setup was designed as Figure 2 shows. To obtain the GHG contribution by particulate organic matter biodegradation, it was employed a 5 L capacity reactor, with 10 g of Puyol grass which

was previously cut into pieces and 4 L of nitrogen-purged water from the reservoir, allowing 1 L of air column so the gases could rise from the water column <sup>(22)</sup>. Similarly, to obtain the GHG contribution by dissolved organic matter biodegradation, it was implemented the same previous setup, and additionally, this mix was stabilized during three days in order to be then homogenate and filtered with a pump and a 20  $\mu\text{m}$  pore size so it contained the dissolved organic matter only. This experimental setup was conducted during a month (30 days) and it was designed in order to measure the parameters recommended to be measured in the determination of GHG emissions from reservoirs according to <sup>(15)</sup>.

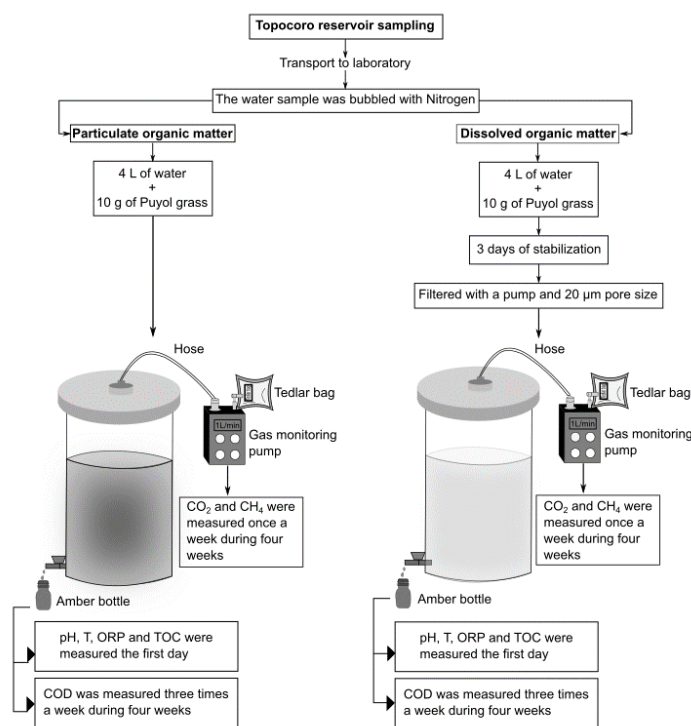


Figure 2. Experimental setup

For the purpose of evaluating the gas formation, it was necessary to measure the quantity of CO<sub>2</sub> and CH<sub>4</sub> produced during the organic matter degradation inside both reactors. A plastic hose was disposed on the upper part of the reactors in the 1 L air column, so gas samples could be taken out once a week during the one month the experimental setup lasted.

### 2.4 Physicochemical analysis

The assays were executed in the GDCON group laboratory, accredited by Instituto de Hidrología, Meteorología y Estudios Ambientales (IDEAM) in the norm 17025:2005 under the resolution 3564/2014. pH and redox potential (ORP) analysis

were performed with a WTW pH7110 equipment, Total Organic Carbon (TOC) analysis were performed with a TOC Apollo 9000 analyzer and Chemical Oxygen Demand (COD) analysis were performed with a spectrophotometer. The analyses were made following the methodologies established on the Standard Methods for the Examination of Water and Wastewater <sup>(23)</sup> (See Table 2).

The parameters pH, ORP, TOC and temperature were measured the first day of the experimental setup. The parameter COD was measured three times a week (Monday, Wednesday and Friday) during the one month the experimental setup lasted. All physicochemical analyses were made taking out a small volume of water from both reactors with amber bottles (See Figure 2).

Table 2. Parameters analyzed

Parameter	Abbreviation	Units	Reference method
pH	pH	-	4.500 H+B
Redox potential	ORP	mV	2.580 B
Temperature	T	°C	-
Total organic carbon	TOC	ppm C	5.310 B
Chemical oxygen demand	COD	mg O <sub>2</sub> /L	5.220 D
CO <sub>2</sub> concentration	[CO <sub>2</sub> ]	mg/L	Internal method
CH <sub>4</sub> concentration	[CH <sub>4</sub> ]	mg/L	Internal method

## 2.5 Methane and Carbon Dioxide measurements

Samples were taken directly from the hoses located on the top of the reactors. The hoses were connected to a gas monitoring pump and this pump was also connected to a 0.5 liters capacity Tedlar bag. After the pumping, the hoses were sealed to prevent the gas exchange with the environment. The pump's suction flow was 1 L/min and each sample was taken during 5 minutes. The Tedlar bags were sealed and then were taken to the analysis in the Gas chromatography-mass spectrometry (GC-MS) 7890A, with detector 5975C and with a conductivity detector. The samples were

manually injected, employing 0.4 mL of sample using a gas syringe <sup>(21)</sup>. Retention times in the chromatograph were 2.4 minutes and 3.6 minutes for methane and carbon dioxide respectively. As mentioned before, these concentration gases were measured once a week during the one month the experimental setup lasted (See Figure 2).

## 2.6 Linear mathematical model for CO<sub>2</sub>

The temporal variation of CO<sub>2</sub>'s mass ( in the batch reactor can be estimated by the Eq. (1) as follows:

$$M_{CO_2}(t) = C_{CO_2}(t)V(t) \quad (1)$$

Where the term  $C_{CO_2}(t)$  is the CO<sub>2</sub> concentration over  $V(t)$  time  $t$  (mass volume<sup>-1</sup>) in the reactor  $V_{(t)}$  and is the volume of store water in the reactor over time  $t$ . The mass balance equation for CO<sub>2</sub> in the reactor is given by Eq. (2):

$$\frac{dM_{CO_2}}{dt} = \frac{d[C_{CO_2}V]}{dt} = C_{CO_2} \frac{dV}{dt} + V \frac{dC_{CO_2}}{dt} = \dot{M}_{in} - \dot{M}_{out} + \dot{M}_G \quad (2)$$

Where  $\dot{M}_G$  is the CO<sub>2</sub>'s mass exchange rate over time  $t$  due to biochemical and physic processes that contribute to mass exchange (mass time<sup>-1</sup>). The terms  $\dot{M}_{in}$  and  $\dot{M}_{out}$  are the CO<sub>2</sub>'s inlet and outlet mass flow over time  $t$  respectively (mass time<sup>-1</sup>), that can be estimated using the following Eq. (3) and Eq. (4):

$$\dot{M}_{in} = Q_{in}C_{in,CO_2} \quad (3)$$

$$\dot{M}_{out} = Q_{out}C_{CO_2} \quad (4)$$

$Q_{in}$  and  $Q_{out}$  represent the inlet and outlet flow over time  $t$  (volume time<sup>-1</sup>) respectively. The CO<sub>2</sub>'s inlet mass flow into the reactor  $\dot{M}_{in}=Q_{in}C_{in,CO_2}$  can be considered null, generally. The volumetric mass balance in the reactor is given by Eq. (5):

$$\frac{dV}{dt} = Q_{in} - Q_{out} \quad (5)$$

If Eq. (5) is substituted in Eq. (2), a simple equation of exchange rate of CO<sub>2</sub> concentration in the batch reactor over time t is obtained by Eq. (6):

$$\frac{dC_{CO_2}}{dt} = \frac{Q_{in}(C_{in,CO_2} - C_{CO_2}) + \dot{M}_G}{V} \quad (6)$$

The term  $\dot{M}_G$  can be written using Eq. (7):

$$\dot{M}_G = \sum_{i=1}^3 m_{\dot{CO}_2,i} \quad (7)$$

Where  $m_{\dot{CO}_2,i}$  represents the CO<sub>2</sub>'s mass flow exchange rate due to process  $i$ . The processes that can be considered are:  $i=1$  mass transfer at the water-air interface;  $i=2$  gas production due to flooded soil and vegetation;  $i=3$  organic matter anaerobic biodegradation in the water column. This model assumes a first order CO<sub>2</sub> production rate, according to dissolved organic carbon (DOC) and particulate organic carbon (POC) concentration. In this contribution we are interested in the organic matter anaerobic biodegradation so according to (20) this process can be expressed as follows:

$$m_{\dot{CO}_2,3} = V(K_{CO_2,DOC} * DOC + K_{CO_2,POC} * POC) \quad (8)$$

Where

$m_{\dot{CO}_2,3}$ : CO<sub>2</sub> production rate (mass/time)

$V$ : Water volume in the reactor (volume)

$K_{CO_2,DOC}$ : Biodegradation constant rate from DOC to CO<sub>2</sub> (CO<sub>2</sub> mass/DOC mass)

$K_{CO_2,POC}$ : Biodegradation constant rate from POC to CO<sub>2</sub> (CO<sub>2</sub> mass/POC mass)

The differentials for Eq. (8) are:

$$\frac{d[DOC]}{dt} = K_{CO_2,DOC}[DOC] \quad (9)$$

$$\frac{d[POC]}{dt} = K_{CO_2,POC}[POC] \quad (10)$$

Considering Eq. (7) and Eq. (8) in Eq. (6), and taking into consideration that there is not inflow

nor outflow (i.e.  $\frac{dC_{CO_2}}{dt} = \frac{\dot{M}_G}{V}$ ), it is obtained the equation that allows determining CO<sub>2</sub> concentration at any instant of time inside the batch reactor.

$$\frac{dC_{CO_2}}{dt} = (K_{CO_2,DOC} * DOC + K_{CO_2,POC} * POC) \quad (11)$$

Eq. (9), Eq. (10) and Eq. (11) represent a first order ordinary differential equation system of initial value to determine the CO<sub>2</sub> evolution over time into the reactor.

## 2.7 Exponential mathematical model for CH<sub>4</sub>

Authors like Tremblay et al. <sup>(20)</sup> and Sogari <sup>(24)</sup>, point out that CO<sub>2</sub> production rate by decomposition of flooded soil and vegetation can be predicted by Eq. (12) as follows:

$$M(t) = M_{Max}[1 - \exp(-t/A)] \quad (12)$$

Where:

$M(t)$ : Gas mass produced over time (mass)

$M_{Max}$ : Maximum quantity of gas produced under the most favorable conditions (mass)

$A$ : Parameter that depends on environmental variables such as temperature, and the degradation organic matter.

According to <sup>(20)</sup> and <sup>(24)</sup> for this model,  $M(60 \text{ d}) = 0$  in the case of methane which indicates that the maximum CH<sub>4</sub> production rate doesn't occur just after filling the reservoir, but it can occur after 60 days. For CH<sub>4</sub>, as will be seen further, it was implemented this model, because real data exhibited an exponential behavior, unlike CO<sub>2</sub> that exhibited a linear behavior. The parameter A used was 0.1497, whose value was the one that minimized the error of the model and data. For the parameter  $M_{max}$  it was used the following Eq. (13) <sup>(16)</sup>:

$$M_{Max} = \frac{V_{CH_4}}{S_{org}} \quad (13)$$

Where:

$V_{CH_4}$ : Methane volume generated (mL)

$S_{org}$ : Total organic matter used in all the process (g)

## 2.8 Computational model

The computational model stage was carried out using the programming language MatLab. The Eq. (9), Eq. (10) and Eq. (11) were developed for the CO<sub>2</sub> first order model, and the Eq. (12) and Eq. (13) were developed for the CH<sub>4</sub> exponential model. The differential equations were solved by Runge Kutta method with MatLab's command ode45 which solves ordinary differential equations. The results obtained after running the models were graphed and then were compared with results measured by the chromatographer. R<sup>2</sup> parameter was calculated in order to determine how good the model adjustment to reality is.

## 3. Results and analysis

### 3.1 Physicochemical parameters

Table 3 shows the initial values of the physicochemical parameters. pH and temperature conditions were appropriate for the growth of the adequate group or archaea in charge of methane production; pH was adjusted very well to microorganisms requirements and temperature was in a value really close to the optimum operating range, taking into account that methanogenic archaeas live in strict environmental conditions, they are considered mesophilic because they operate in an optimum temperature range between 25-35°C, and they are considered neutrophil because their optimum pH range is close to neutral between 6.8-7.4<sup>(25-26)</sup>. The negative values of redox potential measured, allow concluding that reducing conditions were favored, thus, strict anaerobic metabolism of the archaeas.

*Table 3. Initial physicochemical parameters*

Sample	pH	Redox potential (mV)	Temperature (°C)	TOC (ppm C)
Water + Dissolved organic matter	6.748	-50.5	24	14.314
Water + Particulate organic matter	7.318	-164.3	24	18.347

It was found that TOC concentrations in the second reactor were higher (Table 3), because this reactor contained particulate organic matter, while the first reactor contained only dissolved organic matter due to filtering process. This parameter was used as an input for the DOC and POC values in the linear model.

Figure 3 and Figure 4 show the interpolation of COD after data linearization implemented by the methodology contemplated in<sup>(27)</sup>, where the natu-

ral logarithm function was employed (to both variables, dependent and independent), for both dissolved and particulate organic matter. Each figure includes the equation of fit to the line and R<sup>2</sup> parameter to evaluate the variables correlation.

In both figures, the R<sup>2</sup> parameter obtained was close to 1, this indicates a good fit of data to a straight line, and the slope of both equations was used to get the organic matter biodegradation rate for the linear model to predict gases generation.

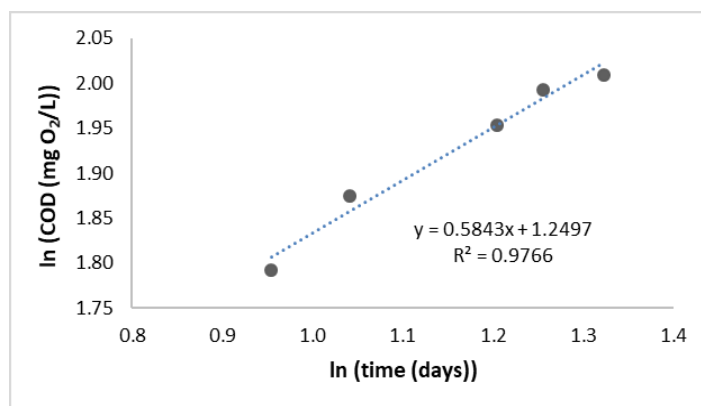


Figure 3. COD data for the reactor containing dissolved organic matter

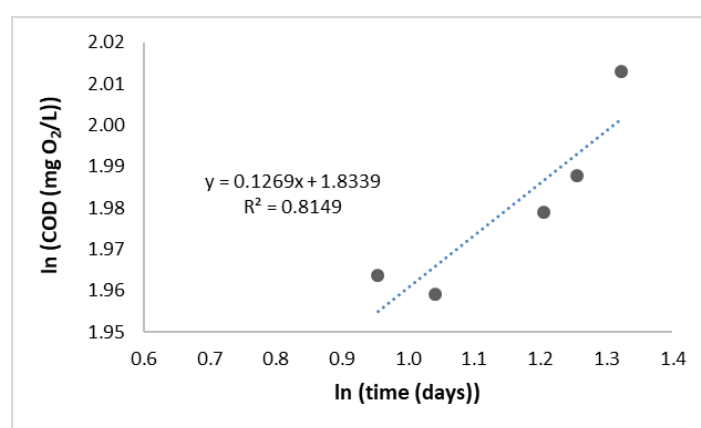


Figure 4. COD data for the reactor containing particulate organic matter

### 3.2 Biodegradation rates for linear model

Biodegradation rate for both dissolved and particulate organic matter was 0.5843 mg O<sub>2</sub>/L.d and 0.1269 mg O<sub>2</sub>/L.d, respectively (Figure 3 and Figure 4), this indicates that dissolved organic matter biodegradation rate was bigger, what was expected because the dissolved organic matter is the most assailable way for microorganisms.

Linear model required organic matter biodegradation rates as an input data, so that, it was necessary to perform a unit conversion to mg CO<sub>2</sub>/L.d. For this purpose, it was implemented a 1:1 conversion factor, assuming that 1 mol of consumed O<sub>2</sub> produces 1 mol of CO<sub>2</sub>. Starting from both constants, it was obtained the biodegradation rates as follows:

**For dissolved organic matter:**

$$K_{CO_2,DOC} = \frac{0,5843 \text{ mg } O_2}{L.d} * \frac{1 \text{ mol } O_2}{32000 \text{ mg } O_2} * \frac{1 \text{ mol } CO_2}{1 \text{ mol } O_2} * \frac{44000 \text{ mg } CO_2}{1 \text{ mol } CO_2} \rightarrow \frac{0,8034 \text{ mg } CO_2}{L.d}$$

**For particulate organic matter:**

$$K_{CO_2,POC} = \frac{0,1269 \text{ mg } O_2}{L.d} * \frac{1 \text{ mol } O_2}{32000 \text{ mg } O_2} * \frac{1 \text{ mol } CO_2}{1 \text{ mol } O_2} * \frac{44000 \text{ mg } CO_2}{1 \text{ mol } CO_2} \rightarrow \frac{0,1745 \text{ mg } CO_2}{L.d}$$



### 3.3 Gas emissions

The results of gas production in each reactor are shown in Table 4. In both cases, CH<sub>4</sub> was produced just after the third week of the experimental setup, and this coincides with the postulation of the exponential mathematical model, which considers that CH<sub>4</sub> is not produced since the beginning, unlike CO<sub>2</sub> that is produced immediately in both reactors and it has a linear behavior. This is because in time zero the amount of methanogenic archaeas, which are responsible of CH<sub>4</sub> production, was not significant yet.

Conversely, CO<sub>2</sub> exhibited a linear behavior and its production was greater than CH<sub>4</sub>'s, because this last gas was produced only during the final step of the anaerobic biodegradation process, whilst CO<sub>2</sub> was produced at various stages of the process, since the beginning until the end.

**Table 4.** Volume of produced gas

Day	Water + Dissolved organic matter		Water + Particulate organic matter	
	CH <sub>4</sub> (mL)	CO <sub>2</sub> (mL)	CH <sub>4</sub> (mL)	CO <sub>2</sub> (mL)
7	0.0000	4.8376	0.0000	10.7294
14	0.0000	23.5938	0.0000	10.9784
21	0.2061	33.7351	0.5957	20.5303
30	0.7167	46.2520	3.8152	35.8673

In order to compare the gas production data with the results after the implementation of the models, the gas volume was converted to concentration units using the ideal gas equation (Eq. (16), following the methodology presented in <sup>(21)</sup>:

$$PV = nRT \quad (16)$$

Where:

*P*: Pressure at which the experiment was performed (0.84 atm)

*V*: Gas volume produced (mL)

*n*: Gas moles produced (moles)

*R*: Constant of ideal gas (0.082 atm.L/mol.K)

*T*: Temperature at which the experiment was performed (297 K)

Finally, the amount of gases produced for both dissolved and particulate organic matter biodegradation were summed up to have the total amount of produced gas by both contributions, and it was divided by the 4 L of water used in each reactor. In Table 5, the final results of produced gases during the 30 days experimentation are shown.

**Table 5** Total produced gas concentrations

Day	CH <sub>4</sub> (mg/L)	CO <sub>2</sub> (mg/L)
7	0.0000	5.9228
14	0.0000	13.1539
21	0.1109	20.6466
30	0.6269	31.2443

Results from Table 5 can be also expressed in terms of gas fluxes, knowing the radius of surface water (0.077 m) and the emission gas time in both batch reactors, as shown in Table 6.

**Table 6.** Flux gas emissions

Day	CH <sub>4</sub> (kg/d.m <sup>2</sup> )	CO <sub>2</sub> (kg/d.m <sup>2</sup> )
7	0.0000	1.82e-4
14	0.0000	2.02e-4
21	1.13e-6	2.11e-4
30	4.49e-6	2.24e-4

### 3.4 GHG model implementation

Figure 5 shows the linear model for CO<sub>2</sub> and its comparison with real measured data. It can be seen that the model proposed presents a good fit to measured data, because the determination coefficient R<sup>2</sup> indicates it is a good correlation being a value close to 1. After this result, we can conclude that CO<sub>2</sub> production from organic matter anaerobic biodegradation follows a first order biodegradation kinetics and it can be simulated with the first order differential equation of initial value shown in Eq. (9), Eq. (10) and Eq. (11) because it accomplishes the assumptions.

The variables and parameters contemplated in this model, such as the amount of DOC and POC and its biodegradation rate, can be considered as good estimates of formation of linear behave gases produced by microbial organic matter biodegradation.

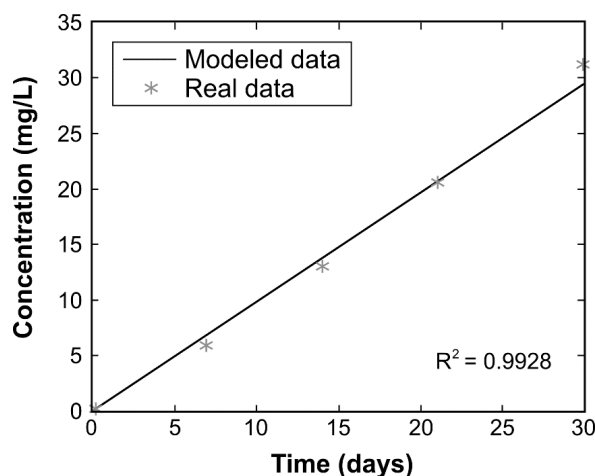


Figure 5. CO<sub>2</sub> linear model results.

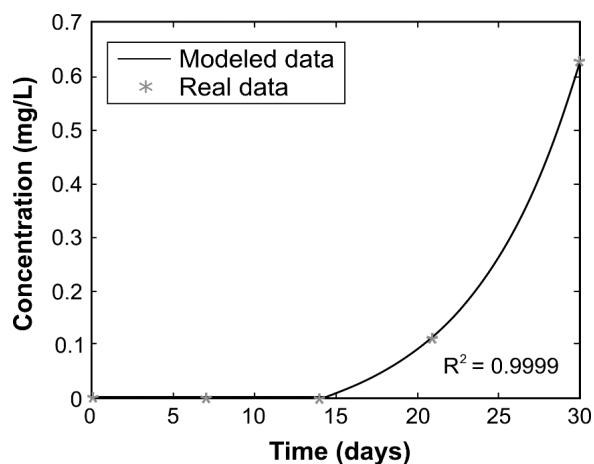


Figure 6. CH<sub>4</sub> exponential model results

For the case of CH<sub>4</sub> and its non-linear behavior during measurements the exponential model proposed in <sup>(20)</sup> and <sup>(24)</sup> was implemented. For the first two weeks it was established in the model a value of zero for the CH<sub>4</sub> produced because CH<sub>4</sub> was produced just after the day 14. In Figure 6, it can be seen that the adjustment of the model to the behavior of real data was very accurate, because the value of R<sup>2</sup> indicated a good fit (value close to 1), considering the adaptation made to the model so during the first 14 days the value of CH<sub>4</sub> concentration was zero. According to this result, it can be concluded that the assumptions of the model were satisfied, that is to say, CH<sub>4</sub> production in Topocoro reservoir by organic matter anaerobic biodegradation exhibited an exponential behavior and during the first days after starting the biodegradation the CH<sub>4</sub> concentration was null. This exponential behavior of CH<sub>4</sub> is due to a progressive increase in the number of methanogenic microorganisms, which adapt to environmental conditions following the microorganism's growth kinetics. Besides, for CH<sub>4</sub> production it is necessary that a series of substrate making processes used by methanogenic archaeas during their metabolism - like acetate, hydrogen and carbon dioxide - occur <sup>(19)</sup>. Therefore, its production is slower than CO<sub>2</sub>'s considered in this study.

#### 4. Conclusions

The flooded organic matter in a reservoir constitutes an important source of GHG emission

to the atmosphere. In this contribution, at laboratory scale, it was quantified the emission of CO<sub>2</sub> and CH<sub>4</sub> using two batch reactors filled with water and Puyol grass from Topocoro reservoir, located in Santander, Colombia. One reactor was employed to analyze the dissolved organic matter biodegradation and the other was employed to analyze the particulate organic matter biodegradation. Negative values of ORP measured in both reactors showed anaerobic environment favoring, strict condition for methanogenic archaeas proliferation, which are responsible for CH<sub>4</sub> generation as the last product of organic matter anaerobic decomposition. Further, pH was tested to have a value close to 7 and temperature was tested to have a value close to 25°C, since these archaeas are neutrophilic and mesophilic, thus, environmental conditions were not a limiting factor for their reproduction.

On the other hand, it was quantified the production of CO<sub>2</sub> and CH<sub>4</sub> during the experimental setup. CO<sub>2</sub> started being emitted from the water column since the first week, whilst CH<sub>4</sub> required two weeks to be produced. This was expected because CO<sub>2</sub> is produced since the second stage of organic matter anaerobic decomposition (acidogenesis) until the final stage (methanogenesis), whereas CH<sub>4</sub> is produced only during the final stage.

It was detected that CO<sub>2</sub> and CH<sub>4</sub> generation, due to organic matter biodegradation in both

reactors, presented different behaviors. CO<sub>2</sub> exhibited a linear production while CH<sub>4</sub> exhibited an exponential production. So, following the objective of calibrating mathematical models for the generation of these two gases, it was found that CO<sub>2</sub> is fitted to a linear model and conversely, CH<sub>4</sub> is fitted to an exponential model. This fact allows to conclude that production of these gases can be predicted knowing the organic matter biodegradation rate, independent of the number of microorganisms involved in these reactions. Biodegradation rate is a good estimate to predict the production of these gases because it depends on the physicochemical variables that affect reaction rate and gas production. In this study, mathematical models were implemented to quantify these GHG's emissions, with the purpose of calibrating them and to have the best parameters that represent this process and that minimize the error. In future research, this calibration can be implemented to quantify gas emissions during a longer time frame than considered in this study, and thus, to comply with the United Nations Framework Convention on Climate Change about inventory of GHG flows in each country.

## 5. Acknowledgment

To ISAGEN company and to GDCON laboratory group from Universidad de Antioquia for their financing through the agreement 47/26: "Cuantificación de emisiones de GEI para el Proyecto Hidroeléctrico Sogamoso".

## 6. References

1. Duque EA, González JD, Restrepo JC. Developing sustainable infrastructure for small hydro power plants through clean development mechanisms in Colombia. *Procedia Engineering*. 2016; 145: 224-233.
2. Dos Santos MA, Damazio JM, Rogério JP, Amorim MA, Medeiros AM, Abreu JLS, et al. Estimates of GHG emissions by hydroelectric reservoirs: The Brazilian case. *Energy*. 2017; 133: 99-107.
3. Guérin F, Deshmukh C, Labat D, Pighini S, Vongkhamsao A, Guédant P, et al. Effect of sporadic destratification, seasonal overturn, and artificial mixing on CH<sub>4</sub> emissions from a subtropical hydroelectric reservoir. *Biogeosciences*. 2016; 13(12): 3647-3663.
4. Deshmukh C, Guérin F, Labat D, Pighini S, Vongkhamsao A, Guédant P, et al. Low methane (CH<sub>4</sub>) emissions downstream of a monomictic subtropical hydroelectric reservoir (Nam Theun 2, Lao PDR). *Biogeosciences*. 2016; 13(6): 1919-1932.
5. Kemenes A, Forsberg BR, Melack JM. Downstream emissions of CH<sub>4</sub> and CO<sub>2</sub> from hydroelectric reservoirs (Tucuruí, Samuel, and Curuá-Una) in the Amazon basin. *Inland Waters*. 2016; 6(3): 295-302.
6. Fearnside PM. Greenhouse gas emissions from Brazil's Amazonian hydroelectric dams. *Environmental Research Letters*. 2016; 11(1): 011002.
7. Lessa ACR, dos Santos MA, Maddock JEL, Dos Santos C. Emissions of greenhouse gases in terrestrial areas pre-existing to hydroelectric plant reservoirs in the Amazon: The case of Belo Monte hydroelectric plant. *Renewable and Sustainable Energy Reviews*. 2015; 51: 1728-1736.
8. Louis V, Kelly C, Duchemin E, Rudd J, Rosenberg D. Reservoir surfaces as sources of greenhouse gases to the atmosphere: A global estimate. *Bioscience*. 2000; 50 (9): 766-775.
9. Steinhurst W, Knight P, Schultz M. Hydropower greenhouse gas emissions. *Conservation Law Foundation*. 2012; 24:6.
10. Bastviken D, Cole J, Pace M, Tranvik L. Methane emissions from lakes: Dependence of lake characteristics, two regional assessments, and a global estimate. *Global biogeochemical cycles*. 2004; 18(4).
11. Bartlett K. B, Crill PM, Sebacher DI, Harriss RC, Wilson JO, Melack JM. Methane flux from the central Amazonian floodplain. *Journal of Geophysical Research: Atmospheres*. 1988; 93(D2): 1571-1582.

12. Prairie YT, Alm J, Beaulieu J, Barros N, Battin T, Cole J, et al. Greenhouse gas emissions from freshwater reservoirs: what does the atmosphere see? *Ecosystems*. 2018; 21(5): 1058-1071.
13. Deemer BR, Harrison JA, Li S, Beaulieu JJ, Del Sontro T, Barros N, et al. Greenhouse gas emissions from reservoir water surfaces: a new global synthesis. *BioScience*. 2016; 66(11): 949-964.
14. Dommain R, Frohling S, Jeltsch-Thömmes A, Joos F, Couwenberg J, Glaser PH. A radiative forcing analysis of tropical peatlands before and after their conversion to agricultural plantations. *Global Change Biology*. 2018;(11):5518-5533
15. Goldenfum J. GHG Measurement Guidelines for Freshwater Reservoirs. The UNESCO/IHA Greenhouse Gas Emissions from Freshwater Reservoirs Research Project. International Hydropower Association (IHA). 2010.
16. Kumar A, Sharma MP. A modeling approach to assess the greenhouse gas risk in Koteshwar hydro-power reservoir, India. *Human and Ecological Risk Assessment: An International Journal*. 2016; 22(8): 1651-1664.
17. Mosher JJ, Fortner AM, Phillips JR, Bevelhimer MS, Stewart AJ, Troia MJ. Spatial and temporal correlates of greenhouse gas diffusion from a hydro-power reservoir in the southern United States. *Water*. 2015; 7(11): 5910-5927.
18. Silva J, Lasso A, Lubberding H, Peña M, Gijzen H. Biases in greenhouse gases static chambers measurements in stabilization ponds: Comparison of flux estimation using linear and non-linear models. *Atmospheric environment*. 2015; 109: 130-138.
19. Canchala TdelR. Generación de gases de efecto invernadero en los sedimentos de un humedal natural eutrofizado: Influencia de nutrientes (N y P). Tesis maestría, Facultad de Ingeniería, Maestría en Ingeniería. Universidad del Valle; 2014. <http://hdl.handle.net/10893/7723>
20. Tremblay A, Varfalvy L, Roehm C, Garneau M. Greenhouse gas emissions – Fluxes and processes. In Springer; 2005. 732 p.
21. Lopera LM, Rodriguez DC, Peñuela GA. Aplicación de ensayos en discontinuo para la determinación de flujos de metano y dióxido de carbono en la degradación del material vegetal en el embalse Topocoro. *Ingenierías USBMed*. 2016; 7(2): 67-73.
22. ISAGEN S.A. E.S.P. Central Hidroeléctrica SOGAMOSO (CO). Balance de resultados durante la construcción 2009-2014
23. American Public Health Association (APHA), American Water Works Association (AWWA), Pollution Control Federation (WPCF). Standard methods for examination of water and wastewater. Washington, USA; 2012. 22th ed.
24. Sogari N. UNIVERSIDAD NACIONAL DEL NORDESTE Comunicaciones Científicas y Tecnológicas 2003 Resumen: T-027 Cálculo de la producción de metano generado por distintos restos orgánicos. [Internet]. Corrientes, Argentina; 2003. Disponible en: <http://www.unne.edu.ar/unnevieja/Web/cyt/cyt/2003/comunicaciones/07-Tecnologicas/T-027.pdf>
25. Varnero, M. Manual de biogás. Organización de las naciones unidas para la alimentación y la agricultura (FAO). Roma, Italia; 2011. Disponible en: <http://www.fao.org/docrep/019/as400s/as400s.pdf>
26. Zeikus J. The biology of methanogenic bacteria. *Bacteriological reviews*. 1977; 41(2): 514-541.
27. Chapra S, Canale R. Métodos numéricos para ingenieros. 5° ed. Mexico. Mc Graw Hill; 2006.1001 p.



Revista Ingeniería y Competitividad por Universidad del Valle se encuentra bajo una licencia Creative Commons Reconocimiento - Debe reconocer adecuadamente la autoría, proporcionar un enlace a la licencia e indicar si se han realizado cambios. Puede hacerlo de cualquier manera razonable, pero no de una manera que sugiera que tiene el apoyo del licenciador o lo recibe por el uso que hace.