



# Sanitary hot water production from heat recovery in hotel buildings in Cuba

## *Producción de agua caliente sanitaria a partir de recuperación de calor en hoteles de Cuba*

Yarelis Valdivia Nodal<sup>1</sup>, Mario Álvarez Guerra<sup>1</sup>, Julio Gómez Sarduy<sup>1</sup>, Luc Hens<sup>2</sup>, Carlo Vandecasteele name<sup>3</sup>

<sup>1</sup> Universidad de Cienfuegos, Cienfuegos. Cuba

<sup>2</sup> Flemish Institute for Technological Research, Belgium

<sup>3</sup> Department of Chemical Engineering, University of Leuven, Belgium

E-mail: [yvaldivia@ucf.edu.cu](mailto:yvaldivia@ucf.edu.cu)

Recibido: febrero de 2019 Aprobado: junio de 2019

Licencia de uso y distribución Creative Commons Reconocimiento-No Comercial 4.0 Internacional



### RESUMEN/ABSTRACT

*In tropical countries Heating, Ventilation and Air Conditioning (HVAC) systems are commonly used in tourism facilities to maintain comfort, but with considerable electricity consumption. Much attention had been paid to improving efficiency and saving energy in the thermal systems of hotels, e.g. air conditioning and sanitary hot water (SHW). This work is about energy modeling of a conventional vapor compression system with condensation heat recovery for sanitary hot water production in Cuba. The model estimates the total amount of heat rejected in the condenser from measurable external variables, such as: electric power, ambient temperature and chilled water temperature. The system is evaluated under partial load conditions during winter, when temperatures are low and therefore the demand for cooling is less, while hot water is used for rooms or kitchen services. The results show that the model is valid for actual operating conditions working below its nominal capacity.*

**Key words:** *chiller, heat recovery, hotels, sanitary hot water, thermodynamic modeling.*

*En países tropicales, los sistemas de Acondicionamiento de Aire, Calor y Ventilación (HVAC) por sus siglas en inglés, son comúnmente usados en instalaciones turísticas para mantener el confort, pero con un considerable consumo de electricidad. Se ha prestado mucha atención al mejoramiento de la eficiencia y al ahorro de energía en los sistemas térmicos empleados en hoteles, por ejemplo: sistemas de acondicionamiento de aire y agua caliente sanitaria (ACS). Este trabajo trata sobre la modelación energética de un sistema convencional de compresión de vapor con recuperación de calor de condensación para la producción de agua caliente sanitaria en Cuba. El modelo estima la cantidad de calor total rechazado en el condensador, a partir de variables externas medibles, como: potencia eléctrica, temperatura ambiente y temperatura de agua helada. El sistema es evaluado bajo condiciones de operación a carga parcial durante invierno, cuando las temperaturas son bajas y por tanto la demanda de enfriamiento es menor; mientras el agua caliente es usada para habitaciones y servicios de cocina. Los resultados muestran que el modelo es válido para las condiciones reales de operación por debajo de su capacidad nominal.*

**Palabras clave:** *agua caliente sanitaria, enfriadoras, hoteles, modelación termodinámica, recuperación de calor.*

### INTRODUCTION

In tropical countries, air-conditioning systems provide comfortable indoor environmental conditions in buildings. These systems typically present a high energy consumption. Air-cooled chillers are largely used in domestic and commercial facilities. In order to reduce their consumption, it is necessary to have efficient systems and operate them properly. Therefore, it is convenient to analyze and simulate a cooling facility in order to improve its energetic performance to understand their energy efficiency [1-4]. In hotels in Cuba, air-cooled chiller systems are preferred and consume about 65% of the total electricity consumption [5-7].

Air-conditioning systems generate a lot of condensation heat (around of 1,25 times the cooling capacity), which may be recovered to provide sanitary hot water [4]. The integrated system thus offers air-conditioning and hot water at the same time, in contrast to conventional systems where space cooling and water heating is achieved independently and hot water is provided by an individual electric or natural gas fueled boiler. Combined cooling, heating, and power systems can achieve highly efficient utilization of energy by using waste heat recovery technology. It has the advantage that the sanitary hot water is produced from the condensation heat of the chiller and heat pump. The combined system improves the overall performance and enhances the technology [8-13].

Waste heat recovery technologies reduce the overall energy consumption. Air-conditioning systems are good for low-temperature waste heat recovery, as they give the capability to upgrade waste heat to a higher temperature and quality. Sanitary hot water can be achieving by recovering about 20% of the total rejected condensation heat, also the COP of the system could be increased [14]. Imbert [15], demonstrated that the COP of an industrial refrigeration installation could be improved, and the costs of water heating reduced by installing a heat recovery system. A thermodynamic simulation for a single stage centrifugal chiller with a heat exchanger between the compressor outlet and the condenser to supply hot water in a hotel in South China, was developed by [16] and showed that the combined system of the chiller unit is very useful in hotel buildings. It is therefore important to discover the maximum amount of recoverable heat for the highest potential of the process and to ensure the achievement of the maximum efficiency from a waste heat recovery system [14].

Sanitary hot water usage (SHW) accounts for a significant share of energy consumption in different types of buildings. The existing guidelines for the water demand of non-residential buildings are outdated and do not include the SHW demand [17, 18]. The lack of information also complicates the appropriate design of hot water generation systems and optimal selection of the type and size of the water heating devices [19]. Naldi et al. [20] developed a numerical model for the seasonal performance evaluation of electric heat pumps taking into account the production of sanitary hot water (SHW) warranted using condensation heat. The results show that the primary energy consumption of the system is lower than that of traditional cooling and SHW devices (even more than 30%). Hiller and Johnson [21, 22], did some research on the water and energy consumptions in the hotel sector, and found that the SHW system is one of the major end users of the energy and water. Another study on hot water production in hotels in Cyprus was develop by [23]. The results show that the combination of air-source heat pumps with flat plate solar collectors leads to the lowest primary energy consumption compared with the uses of boiler systems that are currently in use in almost all four and five star hotels. The authors highlight the use of solar thermal systems in combination with air-source heat pumps. This paper focuses on energy performance modelling of a combined system that simultaneously provides air conditioning and sanitary hot water in a hotel in Cuba. The utility of this type of systems for hotels is analyzed.

## MATERIALS AND METHODS

Heat recovery equipment is commonly used for the production of sanitary hot water (SHW) in hotels, with centralized air-conditioning systems. Heat recovery includes a new element in the refrigeration cycle although the production of chilled water remains the main function. A typical scheme of a refrigeration system with heat recovery is shown in figure 1.

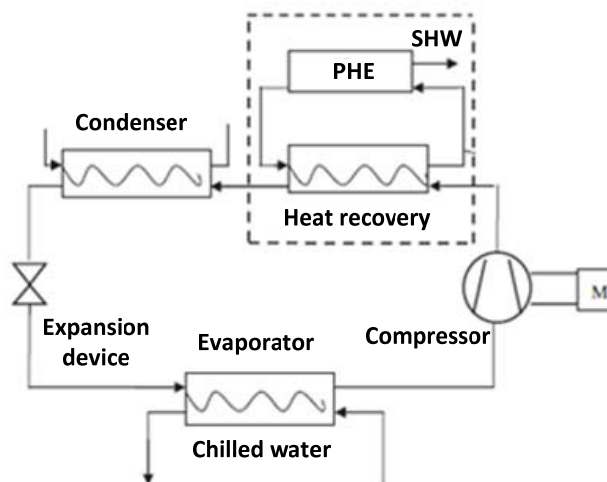


Fig. 1. HVAC system with heat recovery. (Gong, et al. 2012).

In addition to the basic components of a vapor compression system, a heat recovery is incorporated at the compressor outlet. This element is also known as a desuperheater and is usually a tube and shell or plate heat exchanger. Its function is to transfer the heat of the refrigerant gas that comes from the compressor at high temperature to the water in a closed loop. Subsequently, the refrigerant goes to the condenser at a lower temperature where it finally condenses until it reaches the sub-cooled liquid state and completes its process in the expansion valve to repeat the cycle again. Although promising from a theoretical point of view, heat recovery has disadvantages including the need for additional backup devices because of the limited heat available during partial load performance, the temporal mismatch between cooling load and sanitary hot water load, and the limited functioning during the winter season [24].

### Chiller performance

The thermodynamic model is based on an existing plant with an air-cooled chiller with a nominal capacity of 505 kW serving a hotel. A general scheme of the system is shown in figure 2. The chiller has a shell and a tube liquid evaporator designed for a temperature of 3°C. It produces chilled water at a fixed flow rate of 22 kg/s in all operating conditions. The chilled water is supplied at 8,9°C ( $T_{10}$ ) and returns to 11,5°C ( $T_9$ ) at full load. The heat rejection capacity of the air-cooled condenser controls the condensation temperature at about 47°C with an outdoor temperature of 35°C. In the figure 3, ( $T_{13}$ ) and ( $T_{14}$ ) are temperatures at inlet and outlet of the condenser.

The system has two circuits connected by a plate heat exchanger. In the combined system, the chiller is coupled with the primary hot water circuit by the heat recovery, where the superheated refrigerant transfers the heat to the sanitary hot water that is subsequently transferred to the water of the secondary circuit using the plate heat exchanger. In case the temperature of the water at the outlet of the heat recovery is below 60 °C, an auxiliary heater starts operating. Finally, sanitary hot water can be sent directly for consumption, or stored in insulated tanks.

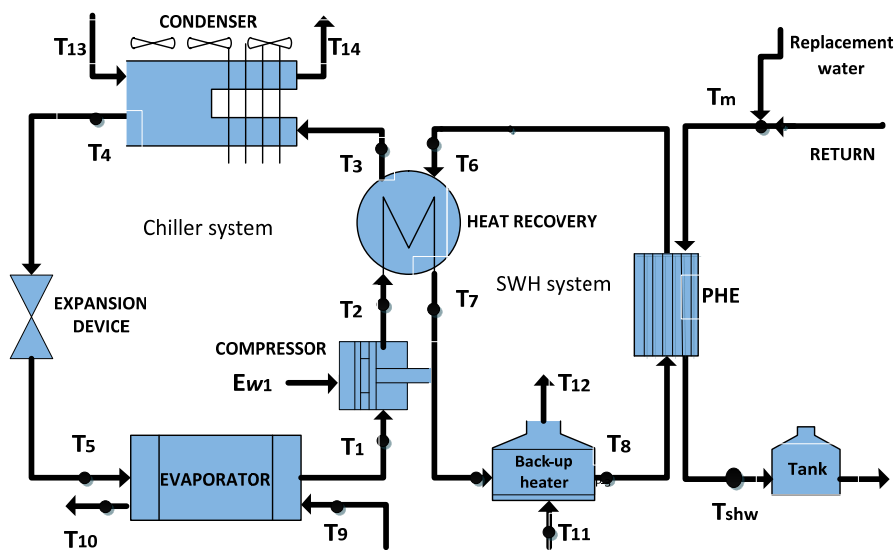


Fig. 2. Physical functional scheme of typical chiller with heat recovery loop for sanitary hot water. (By the author).

### Model

The current study at steady-state conditions is based on the following assumptions:

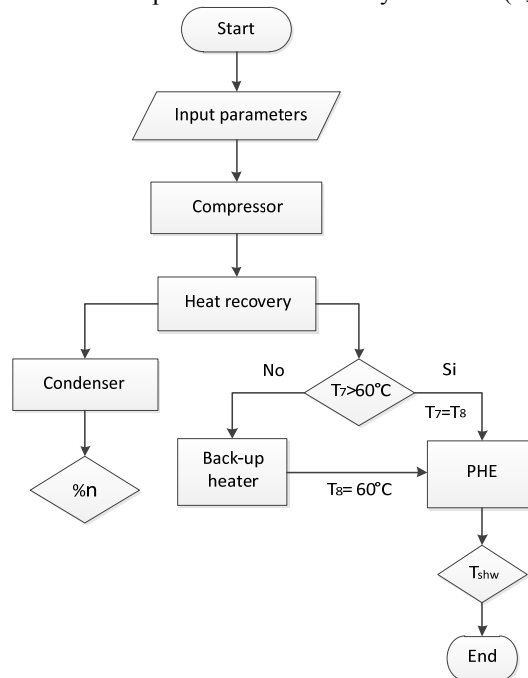
- The pressure drop in the heat exchangers is negligible (evaporator, heat recovery and condenser).
- The pressure drop is negligible at the inlet and the outlet of the compressor;
- The throttling of refrigerant at the expansion valve was assumed to be isenthalpic (constant enthalpy).
- Superheating and subcooling of the refrigerant is assumed to be 8 and 5°C, respectively, for all operating conditions.
- There is not heat exchange between the chiller and its surroundings. This means that the heat rejection ( $Q_{cond}$ ) is the sum of the cooling capacity ( $Q_{enf}$ ) and the compressor power ( $P_{tot}$ ).
- Pressure losses in the refrigerant pipelines are negligible.

The model (figure 3), describes the procedure based on the thermodynamic modeling of the elements of the system. The input variables, thermodynamic properties and operating conditions are listed in table 1.

**Table 1. Input parameters**

Parameter	Unit	Parameter	Unit
Suction pressure	$P_s$ (bar)	Primary water flow circuit	$m_{prim}$ (kg/s)
Discharge pressure	$P_d$ (bar)	Secondary water flow circuit	$m_{sec}$ (kg/s)
Superheating Temperature	$sc$ ( $^{\circ}C$ )	Hot water return temperature	$T_{ret}$ ( $^{\circ}C$ )
Subcooling Temperature	$se$ ( $^{\circ}C$ )	Replacement water temperature	$T_{rep}$ ( $^{\circ}C$ )
Total power input	$P_{tot}$ (kW)	Ambient temperature	$T_{amb}$ ( $^{\circ}C$ )
Enthalpy	$h$ (kJ/kg)	Chilled water temperature	$T_{ch}$ ( $^{\circ}C$ )
Entropy	$s$ (kJ/kgK)	Inlet water temperature to heat recovery	$T_6$ ( $^{\circ}C$ )

The next section details the thermodynamic equations of the model. In the case of heat exchangers, energy balances are defined. Finally, at the end of the model, the thermal potential in the condensation process ( $Q_{cond}$ ), the amount of heat recovered ( $Q_{rec}$ ); the percentage of heat recovery ( $n$ ), and the exit temperature of the sanitary hot water ( $T_{shw}$ ) are obtained.



**Fig. 3. Block diagram representing the structure of the thermodynamic model. (By the author).**

### Compressor

Knowing the suction and discharge pressures of the system and the temperature of the refrigerant at the inlet, the temperature at the compressor discharge is determined by [25], in equation (1).

$$T_2 = \left( \frac{P_2}{P_1} \right)^{(n-1)/n} \cdot T_1 \quad (1)$$

Where:  $p_1$  and  $p_2$  are the suction and discharge pressures respectively,  $T_1$  and  $T_2$  are the compressor inlet and outlet temperatures respectively in Kelvin,  $n$  is the polytropic index. The temperature at the suction of the compressor is given by equation (2).

$$T_1 = T_{ev} + T_{sc} \quad (2)$$

Where  $T_{ev}$  is the evaporation temperature of the refrigerant and  $T_{sc}$  are the superheating degrees refrigerant at the compressor suction.

*Heat recovery model*

Heat recovery rate and maximum heat transfer is described by equation (3) and (4) respectively:

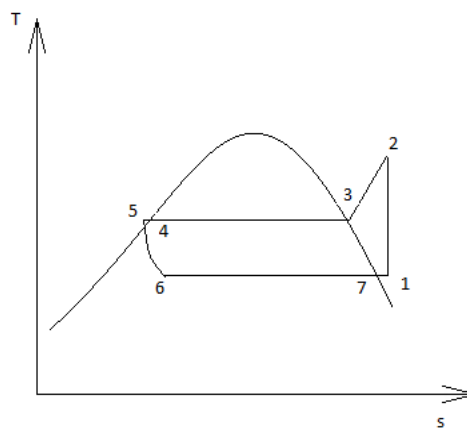
$$Q_{rec} = m_r \cdot Cp_r (T_2 - T_3) \tag{3}$$

$$Q_{m\acute{a}x,rec} = (m \cdot Cp)_{min} \cdot \epsilon_{rec} (T_2 - T_6) \tag{4}$$

Where  $T_2$  and  $T_6$  in ( $^{\circ}C$ ) are the refrigerant and water temperatures at the inlet of the heat recovery, respectively;  $m$  is mass flow of refrigerant (kg/s);  $Cp$  is specific heat of refrigerant (kJ/kgK);  $\epsilon$  is thermal effectiveness of heat recovery.

*Condenser model*

The total heat of the condensation as a process, consists of two parts, the recovery heat ( $Q_{rec}$ ), and the heat rejected ( $Q_{rej}$ ). The amount of heat recovered is given by the enthalpy difference of the refrigerant from the compressor outlet (point 2) to the condenser inlet (point 3). According to diagram (T-s) of figure 4. Cycle 1-2-3-5-6-1 shows a refrigeration cycle. Process 1-2 is isentropic compression. Process 5-6 is an isenthalpic expansion and process 6-7 is isobaric cooling. The cycle is working with superheating (from point 7- to point 1) and subcooling regions (process 4-5).



**Fig. 4. T-s diagram of a conventional refrigeration system.**

The heat rejected is the enthalpy difference from point 3 to the state of saturated liquid (point 4). The total heat of condensation ( $Q_{cond}$ ) can be calculated by equation (5):

$$Q_{cond} = Q_{rec} + Q_{rej} \tag{5}$$

Model to determine the total heat of the condensation

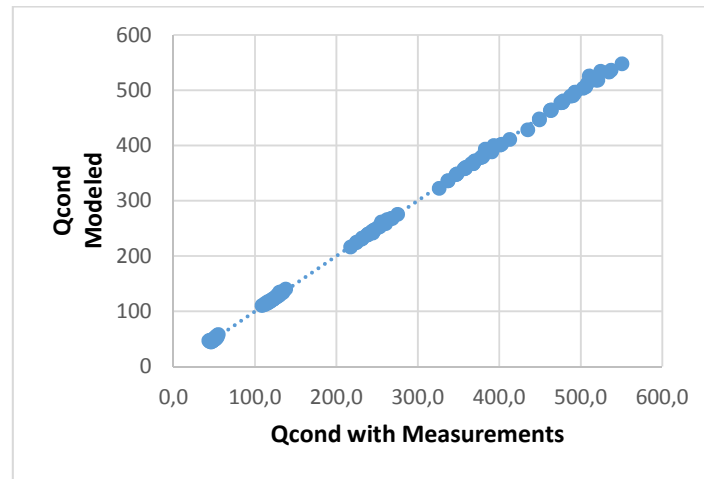
This section describes a model to determine the heat potential rejected by chiller. Statgraphic program is used to obtain an empirical model that describes the behavior of the condenser from outer measurable variables such as electrical power ( $P_{total}$ ), ambient temperature ( $T_{amb}$ ) and chilled water temperature ( $T_{ch}$ ). With the model the calculation is simplified that in traditional way would involve the properties at each point of the cycle.

Based on the data provided by the manufacturer and the data of the actual measurements of operation, it is possible to adjust a surface model to determine the total heat of the condensation as a function of the dependent variable. The modelling for heat rejection is described in equation (6):

$$Q_{cond} = a + bT_{amb}^2 + cP_{total} + dT_{ch} - eP_{total}T_{amb} + f \cdot P_{total}T_{ch} - gT_{amb}T_{ch} \tag{6}$$

Where  $a, b, c, d, e, f$ , and  $g$  are regression coefficients which can be determined for the chiller by measured or manufacturer data.  $a = -115,4$ ;  $b = 0,044$ ;  $c = 7,17$ ;  $d = 4,058$ ;  $e = 0,106$ ;  $f = 0,096$ ;  $g = 0,173$

For the validation of the results, the values provided by the manufacturer and those estimated by the model are compared. For the model used in the estimation of the condensation heat it offers a correlation of  $R^2 = 99,9$  which indicates a good quality in the prediction of the  $Q_{cond}$  variable. (figure 5).



**Fig. 5. Model validation for modeled and measurements variables for condensation heat potential.**

*Hot water supply temperature determination.*

From the balance equation, the outlet temperature of the hot water to consumption is determined by equation (7).

$$Q_{shw} = m_{shw} C_p (T_{shw} - T_{mix}) \quad (7)$$

Where:  $Q_{shw}$ , is the sanitary hot water demand, (kW);  $m_{shw}$  is the sanitary hot water flow, (kg/s);  $C_p$  is specific heat of liquid water, (kJ/kg°C);  $T_{shw}$  is the sanitary hot water supply temperature, (°C);  $T_{mix}$  is mixture temperature of water, (°C).

*Determination of the thermal hot water demand*

The thermal hot water demand is determined taking into account the flow of hot water that is consumed and the difference between the temperatures of the supply and return flows of hot water to the plate heat exchanger.

The temperature of the mixture ( $T_{mix}$ ) is determined as a function of temperature and replacement flow, and temperature and return flow, by energy balance with the equation (8):

$$Q_{mix} = Q_{rep} + Q_{ret} \quad (8)$$

Where:  $Q_{mix}$  is heat rate of the mixture, (kW);  $Q_{rep}$  is heat rate of replacement water, (kW); and  $Q_{ret}$  is heat rate of return water, (kW).

Mass flows balance is obtained by equations (9) and (10).

$$m_{mix} = m_{rep} + m_{ret} \quad (9)$$

$$C_p (m_{ret} + m_{rep}) T_{mix} = m_{ret} C_p T_{ret} + m_{rep} C_p T_{rep} \quad (10)$$

Where:  $m_{mix}$ ,  $m_{rep}$  and  $m_{ret}$  are mass flow rates of mixture, reposition and return water, respectively, in kg/s. Temperature of return water is  $T_{ret}$ , and temperature of reposition water is  $T_{rep}$  in (°C).

Isolating  $T_{mix}$  from equation (10), as shown in equation (11):

$$T_{mix} = \frac{m_{ret}T_{ret} + m_{rep}T_{rep}}{(m_{ret} + m_{rep})} \quad (11)$$

Where:  $m_{ret}$  is the water return mass flow, (kg/s);  $m_{rep}$  is the water replacement mass flow, (kg/s);  $T_{ret}$  is water temperature of return, ( $^{\circ}\text{C}$ );  $T_{rep}$  is water temperature of replacement, ( $^{\circ}\text{C}$ ), and  $T_{mix}$ : The temperature of the reservoir water mixed with the replacement water.

#### *Coefficient of performance of the system with heat recovery*

This system, as it is not a conventional one; its coefficient of performance (COP) is determined as the sum of air conditioning and heat recovery capacities between the chiller total power, see equation (12).

$$COP = \frac{Q_{evap} + Q_{rec}}{P_{total}} \quad (12)$$

Where ( $P_{total}$ ) is the total electric power of the chiller in kW, which is the sum of the power of the compressor and the fans of the condenser.

In the model, the thermal exchange between the chiller and the surroundings (environment) is neglected. This means that the total heat transferred to the condenser ( $Q_{cond}$ ) is the sum of the compressor power ( $P_{comp}$ ) and the cooling capacity ( $Q_{evap}$ ). The cooling demand can be estimated from equation (13), [25].

$$Q_{evap} = Q_{cond} + P_{comp} \quad (13)$$

#### *Measurements*

Operating variables, such as pressures in the suction and discharge line, supply and return chilled water temperature and refrigerant temperature at heat recovery outlet, were monitored by the chiller. PT100 type temperature sensors measured the ambient temperature with a precision of  $0,15^{\circ}\text{C}$ . The flow of sanitary hot water to the system was measured using a magnetic flow meter with an error of 2%. A power analyzer with a precision of 1% of reading was used to determine the chiller power. The measurements were made during one week, during days of low temperature and high occupancy of the hotel (13 to 19 November); in high season of tourism in Cuba.

## RESULTS AND DISCUSSION

The SHW profile for typical winter days described in figure 6. The early morning is not considered since there is no consumption; only the recirculation pump operates.

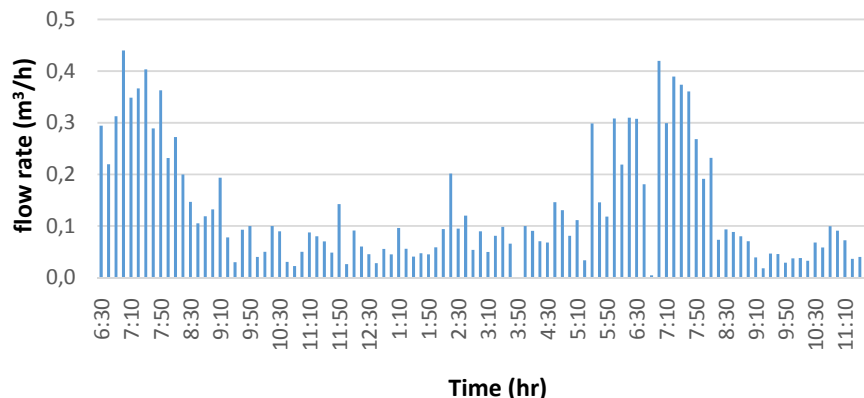


Fig. 6. Sanitary hot water consumption profile for a typical winter day. (By the author).

Between 9:00 a.m. and 4:00 p.m., the hot water demand is low, which corresponds with the sanitary hot water profile, however, there is a thermal potential saving from the chillers. During this period, the heat absorbed by the heat recovery behaves unstable, because of repeated starts and stops in the compressors. In the evening, when the room occupancy increases although the cooling demand is much lower due to the low ambient temperature in winter, there is a high peak of hot water use that it is not covered by the heat recovered from the chillers. In these cases, the use of auxiliary heating is needed during this period to raise the water temperature.

Figure 7, corresponds to the cooling demand of the air conditioning system (obtained from equation 13), and ambient temperature profiles developed from real measurements data. There are two significant peaks of energy ( $Q_{load}$ ) in the morning and afternoon hours, coinciding with the arrival of tourists to the hotel.

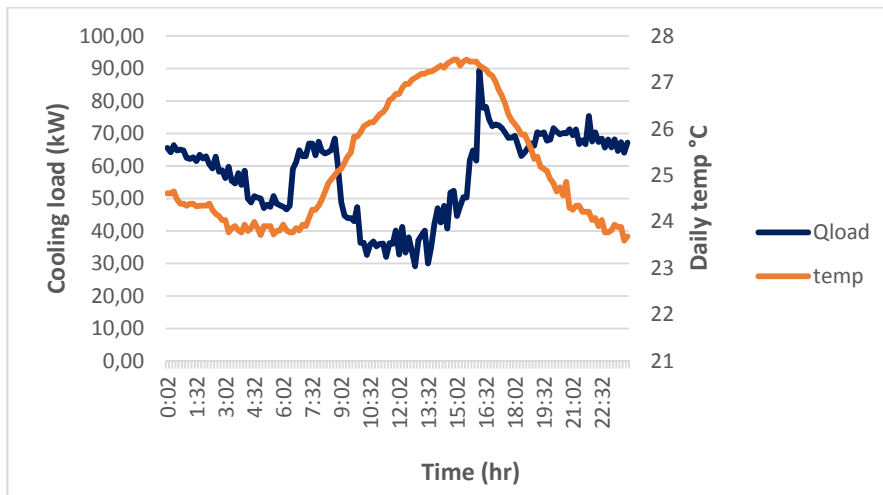


Fig. 7. Cooling load and temperature profile for a winter typical day in a hotel. (By the author).

According to the manufacturer's information for nominal operating conditions of the system working with  $T_{amb} = 35\text{ }^{\circ}\text{C}$ ,  $T_{ch} = 7\text{ }^{\circ}\text{C}$ , the nominal capacity of the heat recovery is 23,7% of the total heat of condensation ( $Q_{cond}$ ) and COP value is 2,78. Under the actual operating conditions for the system, it is possible to estimate the amount of heat recovered in the unit, and to check with the modeled value from the actual operating parameters. (table 2).

Table 2. Operational performance

Parameter	Operational performance		
	Nominal load	Actual load (Max)	Actual load (Min)
Total Chiller power (kW)	181	90	30
Cooling capacity (kW)	505	252	50,5
Total Heat rejected (kW)	668	371	80,5
PLR	1	0,5	0,1
Heat recovery (kW)	158	79,2	16,1
Recovery %	23,6%	21,3%	20%
$COP_{total}$	2,78	3,68	2,22

Under actual performance the system operates below its nominal capacity due to the outside temperature and the oversized equipment. The model obtains reliable results according to the operation, recovering around 20% of the total heat rejected for the sanitary hot water production (figure 8), with high efficiency,  $COP_{total} = 3,68$ . But, as expected, thermal potential available is insufficient in high peaks demand hours due to the lower demand of cooling capacity during all day, so auxiliary heating is needed.



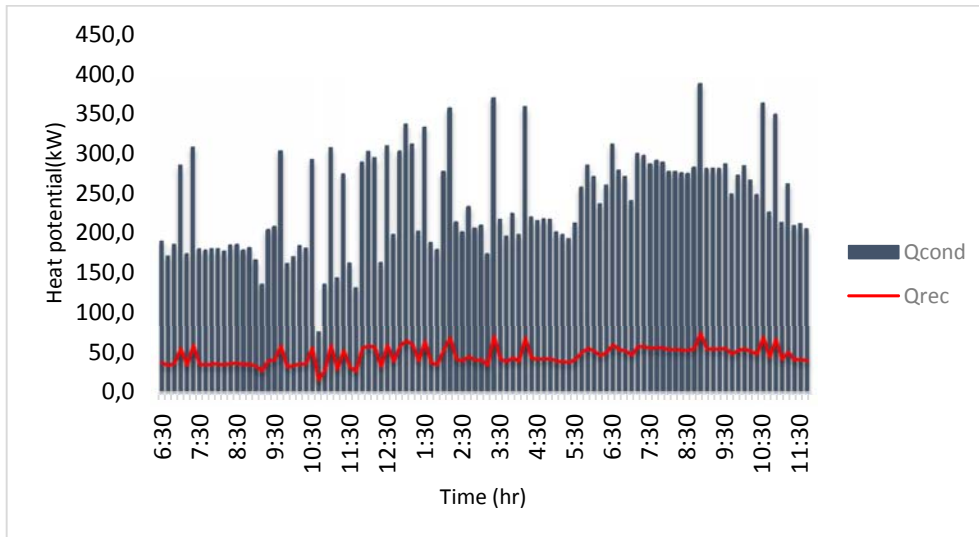


Fig. 8. Heat recovery potential from condenser. (By the author)

Therefore, it is suitable to evaluate the auxiliary heating devices with an analysis from an economic and environmental point of view for the selection of the most appropriate option. This topic may be the subject of future research studies.

## CONCLUSIONS

1. The total amount of heat rejected by the condenser is estimated from measurable external variables, such as: electrical power, ambient temperature and chilled water temperature, obtaining the total thermal potential available at each moment from existing operation parameters.
2. The model does not consider properties of the work substance which simplifies calculations, that in traditional way, involve the determination of enthalpies in different points of the refrigeration cycle.
3. The model predicts the chiller performance for a wide range of operating conditions with good accuracy, and includes an efficiency indicator that consider the combined system of air conditioning and hot water production.

## REFERENCES

- [1]. Belman, J.M.; *et al.* "Analysis of a variable speed vapor compression system using artificial neural networks". Expert Systems with Applications. 2013, v.40, n.1, p. 4362-4369. Disponible en: <https://www.sciencedirect.com/science/article/pii/S0957417413000286?via%3Dihub> ; DOI: <http://dx.doi.org/10.1016/j.eswa.2013.01.015>
- [2]. Chou, J.-S.; *et al.* "Smart meter monitoring and data mining techniques for predicting refrigeration system performance". Expert Systems with Applications. 2014. v.41, n.5, p.2144-2156. Disponible en: <https://www.sciencedirect.com/science/article/pii/S0957417413007446?via%3Dihub> ; DOI: <http://dx.doi.org/10.1016/j.eswa.2013.09.013>
- [3]. Yu, F.W; *et al.* "Economic analysis of air-cooled chiller with advanced heat rejection". International Journal of Refrigeration. 2017, v.73, p.54-64. Disponible en: <https://www.sciencedirect.com/science/article/pii/S0140700716302973?via%3Dihub> ; DOI: <http://dx.doi.org/10.1016/j.ijrefrig.2016.09.016>
- [4]. Xiaohui S; *et al.* "Energy-efficient and economic technologies for air conditioning with vapor compression refrigeration: A comprehensive review". Applied Energy. 2018, v.232, p.157-186. Disponible en: <https://www.sciencedirect.com/science/article/pii/S0306261918313734?via%3Dihub> ; DOI: <https://doi.org/10.1016/j.apenergy.2018.09.067>
- [5]. Vega, B; *et al.* (2015) Modeling and identification of the cooling dynamics of a tropical island hotel. Energy and Buildings. 2015, v.92, p.19-28. Disponible en: [https://www.researchgate.net/publication/272360270\\_Modeling\\_and\\_identification\\_of\\_the\\_cooling\\_dynamics\\_of\\_a\\_tropical\\_island\\_hotel](https://www.researchgate.net/publication/272360270_Modeling_and_identification_of_the_cooling_dynamics_of_a_tropical_island_hotel) ; DOI: [10.1016/j.enbuild.2015.01.036](http://dx.doi.org/10.1016/j.enbuild.2015.01.036)

- [6]. Acosta A, *et al.* "Energy savings and guaranteed thermal comfort in hotel rooms through nonlinear model predictive controllers". *Energy and Buildings*. 2016, v.129, p.59-68. Disponible en: <https://www.sciencedirect.com/science/article/pii/S0378778816306715> ; DOI: <https://doi.org/10.1016/j.enbuild.2016.07.061>
- [7]. Torres Y, *et al.* "Application of building energy simulation in the validation of operational strategies of HVAC systems on a tropical hotel". *Ingeniería Mecánica*. 2017, v.20, n.1, p.31-38. ISSN 1815-5944. Disponible en: [http://scielo.sld.cu/scielo.php?script=sci\\_arttext&pid=S1815-59442017000100005](http://scielo.sld.cu/scielo.php?script=sci_arttext&pid=S1815-59442017000100005)
- [8]. Hengel, F; *et al.* "Performance analysis of a heat pump with desuperheater for residential buildings using different control and implementation strategies". *Applied Thermal Engineering*. 2016, v.105, p.256–265. Disponible en: <https://www.sciencedirect.com/science/article/pii/S1359431116307785?via%3Dihub> ; DOI: <http://dx.doi.org/10.1016/j.applthermaleng.2016.05.110>
- [9]. Tammamo, M., *et al.* "A propane water-to-water heat pump booster for sanitary hot water production: Seasonal performance analysis of a new solution optimizing COP". *International Journal of Refrigeration*. 2015, v.51, p.59-69. Disponible en: <https://www.sciencedirect.com/science/article/pii/S0140700714003545?via%3Dihub> ; DOI: <http://dx.doi.org/10.1016/j.ijrefrig.2014.12.008>
- [10]. Tammamo, M., *et al.* "Seasonal performance assessment of sanitary hot water production systems using propane and CO<sub>2</sub> heat pumps". *International Journal of Refrigeration*. 2017, v.74, p.224-239. Disponible en: <https://www.sciencedirect.com/science/article/pii/S0140700716303231?via%3Dihub> ; DOI: <http://dx.doi.org/10.1016/j.ijrefrig.2016.09.026>
- [11]. Hervás-Blasco, E; *et al.* "Optimal sizing of a heat pump booster for sanitary hot water production to maximize benefit for the substitution of gas boilers". *Energy*. 2017, v.127, p.558-570. Disponible en: <https://www.sciencedirect.com/science/article/abs/pii/S0360544217305236> ; DOI: <https://doi.org/10.1016/j.energy.2017.03.131>
- [12]. Huan S, *et al.* "Thermodynamic optimization of an irreversible Carnot refrigerator with heat recovery reservoir". *Applied Thermal Engineering*. 2017, v.110, p.1624–1634. Disponible en: <https://www.sciencedirect.com/science/article/pii/S135943111631609X?via%3Dihub> ; DOI: <http://dx.doi.org/10.1016/j.applthermaleng.2016.09.013>
- [13]. Li, Fan; *et al.* "Operation optimization for combined cooling, heating, and power system with condensation heat recovery". *Applied Energy*. 2018, v.230, p.305-316. Disponible en: <https://www.sciencedirect.com/science/article/pii/S0306261918312716?via%3Dihub> ; DOI: <https://doi.org/10.1016/j.apenergy.2018.08.101>
- [14]. Jouhara, H; *et al.* "Waste heat recovery technologies and applications". *Thermal Science and Engineering Progress*. 2018, v.6, p. 268–289. Disponible en: <https://www.sciencedirect.com/science/article/pii/S2451904918300015?via%3Dihub> ; DOI: <https://doi.org/10.1016/j.tsep.2018.04.017>
- [15]. Imbert González, Josué; Guillen Gordín, Reinaldo. "Evaluación de un recuperador de calor en una industria frigorífica". *Ingeniería Mecánica*. 2014, v.17, n.1, p.12-21. ISSN 1815-5944. Disponible en: [http://scielo.sld.cu/scielo.php?script=sci\\_arttext&pid=S1815-59442014000100002](http://scielo.sld.cu/scielo.php?script=sci_arttext&pid=S1815-59442014000100002)
- [16]. Gong, G; *et al.* "Thermodynamic simulation of condensation heat recovery characteristics of a single stage centrifugal chiller in a hotel". *Applied Energy*. 2012, v.91, n.1, p.326–333. Disponible en: <https://www.sciencedirect.com/science/article/pii/S0306261911005034> ; DOI: <https://doi.org/10.1016/j.apenergy.2011.08.007>
- [17]. Fabrizio, E; *et al.* "Integrated HVAC and DHW production systems for Zero Energy Buildings". *Renewable and Sustainable Energy Reviews*. 2014, v.40, p.515–541. Disponible en : <https://www.sciencedirect.com/science/article/pii/S1364032114006455?via%3Dihub> ; DOI: <http://dx.doi.org/10.1016/j.rser.2014.07.193>
- [18]. Pieterse-Quirijns, E.J; *et al.* "Validation of non-residential cold and hot water demand model assumptions". *Procedia Engineering*. 2014, v.70, p.1334-1343. Disponible en: <https://www.sciencedirect.com/science/article/pii/S1877705814001490> ; DOI: <https://doi.org/10.1016/j.proeng.2014.02.147>
- [19]. Pang, Zhihong; O'Neill, Zheng. "Uncertainty quantification and sensitivity analysis of the domestic hot water usage in hotels". *Applied Energy*. 2018, v.232, p.424-442. Disponible en: <https://www.sciencedirect.com/science/article/pii/S0306261918315423?via%3Dihub> ; DOI: <https://doi.org/10.1016/j.apenergy.2018.09.221>
- [20]. Fuentes, E; *et al.* "A review of domestic hot water consumption profiles for application in systems and buildings energy performance analysis". *Renewable and Sustainable Energy Reviews*. 2018, v.81, n.1, p.1530-1547. Disponible en: <https://www.sciencedirect.com/science/article/pii/S1364032117308614?via%3Dihub> ; DOI: <http://dx.doi.org/10.1016/j.rser.2017.05.229>

- [21]. Naldi, C; *et al.* "Summer performances of reversible air-to-water heat pumps with heat recovery for domestic hot water production". 6th International Building Physics Conference, IBPC 2015. Energy Procedia. 2015, v.78, p.1117–1122. Disponible en: <https://www.sciencedirect.com/science/article/pii/S1876610215018007> ; DOI: <https://doi.org/10.1016/j.egypro.2015.11.068>
- [22]. Hiller CC, Johnson R. "Hot-water use in hotels: Part 4–comparison of travel and business hotel hot-water system monitoring results". ASHRAE Transactions. 2017, v.123, n.2, p.143-159. Disponible en: <http://web.b.ebscohost.com/abstract?site=ehost&scope=site&jrnl=00012505&AN=125345793&h=kAxNSPANAghwAQX0w1ojecSEvM9dBC0az1TdsiTUJ78ymUVnvCJLvGBJ1Mx8b8cloFQG2dWoKpijy6F8akRt3w%3d%3d&cr=c&resultLocal=ErrCrINoResults&resultNs=Ehost&crhashurl=login.aspx%3fdirect%3dtrue%26profile%3dehost%26scope%3dsite%26authype%3dcrawler%26jrnl%3d00012505%26AN%3d125345793>
- [23]. Hiller CC, Johnson R. "Hot-water use in hotels: Part 5–updated hotel hot-water system design techniques". ASHRAE Transactions. 2017, v.123, n.2, p.160-184. Disponible en: <http://web.a.ebscohost.com/abstract?site=ehost&scope=site&jrnl=00012505&AN=125345794&h=nLPNclZKesS6ayKcn6hIMgbtimDkrUUa1R5ukTRZpbszGlVV7tTExoyskBFIr4p51KqybbtgVymkABylziiAgA%3d%3d&cr=c&resultLocal=ErrCrINoResults&resultNs=Ehost&crhashurl=login.aspx%3fdirect%3dtrue%26profile%3dehost%26scope%3dsite%26authype%3dcrawler%26jrnl%3d00012505%26AN%3d125345794>
- [24]. Michopoulos, A; *et al.* "A study on hot-water production of hotels in Cyprus: Energy and environmental considerations". Energy and Buildings. 2017, v.150, p.1-12. Disponible en: <https://www.sciencedirect.com/science/article/pii/S0378778817303614?via%3Dihub> ; DOI: <http://dx.doi.org/10.1016/j.enbuild.2017.05.071>
- [25]. Yu, F. W; Chan, K. T. "Improved energy performance of air-cooled chiller system with mist pre-cooling Mist improvement on air-cooled chillers". Applied Thermal Engineering. 2011, v.31, p.537- 544. Disponible en: [https://www.researchgate.net/publication/229397877\\_Improved\\_energy\\_performance\\_of\\_air-cooled\\_chiller\\_system\\_with\\_mist\\_pre-cooling\\_Mist\\_improvement\\_on\\_air-cooled\\_chillers](https://www.researchgate.net/publication/229397877_Improved_energy_performance_of_air-cooled_chiller_system_with_mist_pre-cooling_Mist_improvement_on_air-cooled_chillers) ; DOI: doi:10.1016/j.applthermaleng.2010.10.012