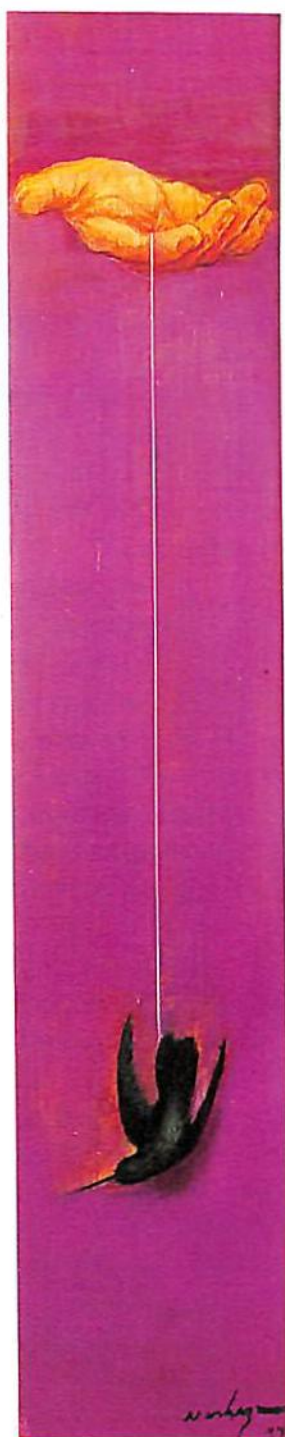


*Luis Nishisawa*



*Judas*, 1989. Acrílico/tela. 200 x 143 cm



*Té llevo colgando de mis manos*, 1999.  
Temple/tela. 80.7 x 26.4 cm



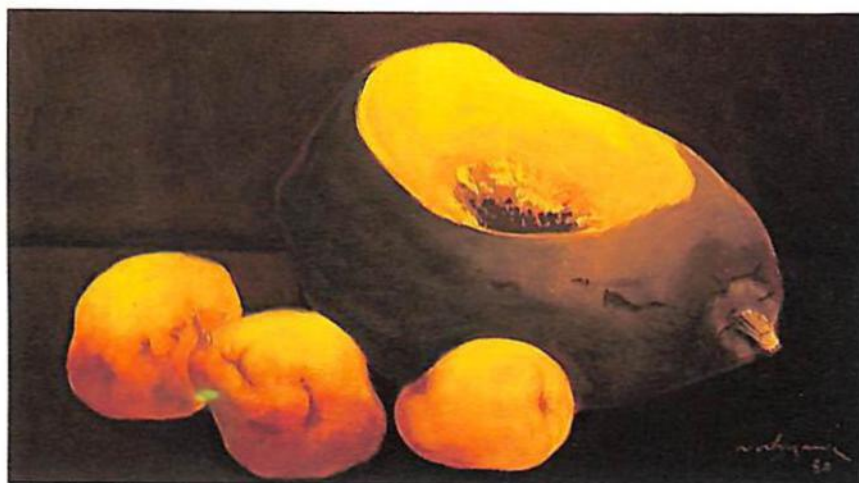
*Mojarra y Jorobado*, 1999. Temple/tela/madera. 70 x 22 cm



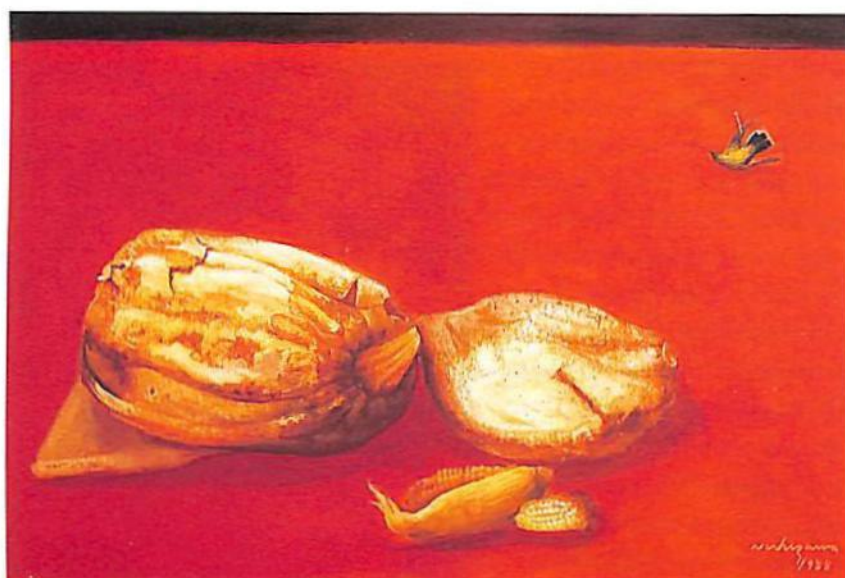
*Granadas*, 1995. Temple/tela/madera. 25 x 61 cm



*Pez seco*, 1999. Temple/tela. 80.5 x 32.8 cm



*Peras*, 1980. Temple/mazonite. 33 x 59 cm



*Calabaza seca*, 1998. Temple/tela/madera. 79 x 120 cm



Mariposa, 1999. Temple/tela/madera. 83.3 x 30.5 cm



Santollos, 1995. Temple/tela/madera. 44 x 59.5 cm

Fotografías: Jorge Ortega