

## Giant pseudoaneurysm of the ascending aorta

RICARDO LEVIN<sup>MTSAC, 1</sup>, MARCELA DEGRANGE<sup>MTSAC, 1</sup>, JORGE BALAGUER<sup>2</sup>

The images correspond to a male patient aged 61, who was admitted due to chest pain; chest x-ray showed a considerable mediastinal widening (Figure 1). He had suffered the replacement of the ascending aorta and the aortic valve (mechanical prosthesis) with coronary reimplantation in 1998

(Bentall procedure). In 2008, he underwent a new intervention, with the repair of a pseudoaneurysm of the ascending aorta.

The angiotomography showed the presence of a giant pseudoaneurysm of the ascending aorta of 10 cm diameter (Figure 2).

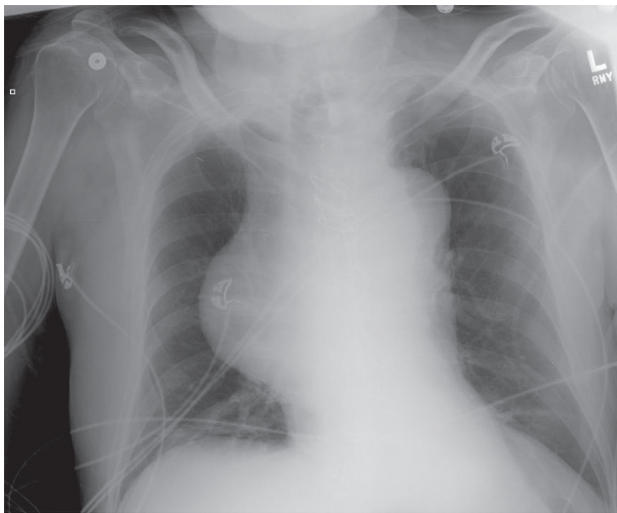


Fig. 1.



Fig. 2.