

*Jatropharum notulæ*  
(*Euphorbiaceæ*), 5

Francisco Javier FERNÁNDEZ CASAS  
&  
Esteban Manuel MARTÍNEZ SALAS

FONTQUERIA **55**(62): 471-480 [seorsim 1-12]  
MADRID, 20-X-2008

*FONTQUERIA* is a series of botanical publications without administrative affiliation. It publishes original works in Botany, particularly those that are of interest to the editors. Its publications are in any language, the only limitation being the ability of the editorial team.

Accredited with the *International Association for Plant Taxonomy* for the purpose of registration of new non-fungal plant names.

#### PRODUCTION

Database consultant: Guillermo GONZÁLEZ GARCÍA  
Typesetting: Ambrosio VALTAJEROS POBAR, Ulpiano SOUTO MANDELOS  
Screen operators: Samuel FARENA SUBENULLS, Emilio NESTARES SANTAINÉS  
Preprinting: Sonja MALDÍ RESTREPO, Demetrio ONCALA VILLARRASO

#### DISTRIBUTION

Postal distribution: contact the main editor  
Mail for electronic distribution: Fontqueria@yahoo.com

#### EDITOR

Francisco Javier FERNÁNDEZ CASAS. Madrid (MA)

#### JOINT EDITOR

Hans Joachim ESSER. München (M). German texts

#### EDITING CONSULTANTS for this fascicle

José María PIZARRO DOMÍNGUEZ (MAF)  
María Eugenia RON ÁLVAREZ. Madrid

ISSN: 0212-0623

Depósito legal: M-29282-1982

## *Jatropha* *notulæ* (*Euphorbiaceæ*), 5

Francisco Javier FERNÁNDEZ CASAS  
Real Jardín Botánico, CSIC. Plaza de Murillo, 2. E-28014 Madrid  
&  
Esteban Manuel MARTÍNEZ SALAS  
Jardín Botánico Nacional, Universidad Nacional Autónoma. México

The first author has mainly developed his work at the Botany Department, School of Life Sciences, Arizona State University (Tempe, AZ, USA); supported by a grant of the Spanish Ministerio de Educación y Ciencia, PR2007-0505.

FERNÁNDEZ CASAS, F. J. & E. M. MARTÍNEZ SALAS (20-x-2008). *Jatropha* *notulæ* (*Euphorbiaceæ*), 5. *Fontqueria* **55**(62): 471-480 [seorsim 1-10].

**Keywords.** Systematics, New species; *Jatropha* Linnaeus, sect. *Loureira* (Cavanilles) Mueller argov. ex Pax, subsect. *Loureira* (*Euphorbiaceæ*). North America: México (Tamaulipas, Veracruz-Llave).

**Abstract.** One new species is described in this paper: *Jatropha Sotoi-Nunyezii* Fernández Casas & Martínez Salas, sect. *Loureira* (Cavanilles) Mueller argov. ex Pax, subsect. *Loureira* (*Euphorbiaceæ*), from México (Tamaulipas, Veracruz-Llave).

**Zusammenfassung.** Es wird hier eine neue Art aus Mexico (Tamaulipas, Veracruz-Llave) beschrieben: *Jatropha Sotoi-Nunyezii* Fernández-Casas & Martínez Salas, sect. *Loureira* (Cavanilles) Muell. argov. ex Pax, subsect. *Loureira* (*Euphorbiaceæ*).

**Resumé.** Une nouvelle espèce est proposée: *Jatropha Sotoi-Nunyezii* Fernández Casas & Martínez Salas, sect. *Loureira* (Cavanilles) Mueller argov. ex Pax, subsect. *Loureira* (*Euphorbiaceæ*), provenant de Mexique (Tamaulipas, Veracruz-Llave).

**Resumo.** Descrebe-se uma espécie nova: *Jatropha Sotoi-Nunyezii* Fernández Casas & Martínez Salas, sect. *Loureira* (Cavanilles) Mueller argov. ex Pax, subsect. *Loureira* (*Euphorbiaceæ*), procedente do México (Tamaulipas, Veracruz-Llave).

**Resumen.** Se describe una especie nueva: *Jatropha Sotoi-Nunyezii* Fernández Casas & Martínez Salas, sect. *Loureira* (Cavanilles) Mueller argov. ex Pax, subsect. *Loureira* (*Euphorbiaceæ*), procedente de México (Tamaulipas, Veracruz-Llave).

It continues our series of publications dealing with the genus *Jatropha* Linnaeus (*Euphorbiaceæ*), published previously in this magazine; see the preceding paper, F. J. FERNÁNDEZ CASAS (2008).

We described here a new species that we consider a Mexican endemism, known only in the states of Tamaulipas and Veracruz-Llave. It belongs to the subgenus *Curcas* Adanson ex Pax in H. G. A. Engler & K. A. E. Prantl, section *Loureira* (Cavanilles) Mueller argov. ex Pax, Pflanzenreich IV, 147: 74 (1910), subsection *Loureira*.

The new species is related to *Jatropha ciliata*, but it is closer to *J. Gaumeri*. It differs by its hairy inflorescences which are not glabrous; by its weaker fruit, with weaker internal pericarp.

5 ***Jatropha Sotoi-Nunyezii*** Fernández Casas & Martínez Salas, *Fontqueria* **55**(62): 471-480, n° 5 (20-x-2008), **spec. nov.**

TYPUS: E. M. Martínez Salas 40162 (MEXU s/n, holo-)

– Subgen. *Curcas* AdansonPax in H. G. A. Engler & K. A. E. Prantl, sect. *Loureira* (Cavanilles) Mueller argov. Pax, Pflanzenreich IV, 147: 74 (1910), subsect. *Loureira*

NOMINA VERNACULA. Tamaulipas: "Pipián", L. Hernández Sandoval 1090 (MO); L. Hernández

*Sandoval 1091* (MEXU).

DISTR. GEOGR.: **America borealis**: México (Tamaulipas, Veracruz-Llave); cf. tabula 1 (pag. 480).

ILLUSTR.: laminæ nostræ i (pag. 473), ii (pag. 474), iii (pag. 477), iv (pag. 478).

**LATINA DESCRIPTIO** ex holotypo *E. M. Martínez Salas 40162* (MEXU s/n). Mensis Iulio lecta, hæc collectio uterque sexus flores atque regmata plane matura simul ostendit

*Brachyblasti* fere cylindrici, ad  $1 \times 0,5$  cm; interdum inferioribus internodiis parum elongatis ramulos aliquo modo aspectu brachyblastorum prodeunt.

FOLIA secus ramos hornotinos atque brachyblastos disposita; *iuvénilia* bene cordiformia, adaxialiter viridia atque pilosa, abaxialiter albo villosa teselata; *teselæ* propter nervulos glabros pictæ sunt, contra illud quod in foliis adultis observatur. *Petiolus* usque 6 cm, cylindricus, hirtus villosus. *Limbus* usque  $13 \times 10,5$  cm, triangular cordiformis vel subtrilobus, ad basim truncatus vel cordatus. *Nervi principali (radiali)* tres vel quinque (rare septem), duo extimi infirmi marginem non attingetes. *Nervi secundarii*  $40-60^\circ$ , pauci, proni, recti vel arcuati, marginem non attingetes, brochidodromi, alterni, distantes, ca. 1-2(-3) in unoquoque latere. *Nervi terciarii* reticulati.

INFLORESCENTIÆ apicales axillaresque, breves, paucifloræ, dichasialis, pauciramificatæ; florendi tempore 1-2,5 cm longæ; *pedunculus partialis* florendi tempore 0,5 cm, albo hirtus, longitudinaliter striatus; *pedunculi partiales* patentes; quæque inflorescentia sæpe fœmineus flos unicus habet, aliquando aliquot gerens sed tantum unicus fructiferus assecutus est. *Bracteæ* oblongo lanceolatæ, utrimque albo villosæ, ad sepalos similimæ ser parum majores, usque  $6 \times 2$  mm, modice canaliculatæ. *Bracteolæ* ad bracteas similimæ sed parum minores; hæc illæque sursum inflorescentia gradatim minorantes.

FLORES MASCULI subsesiles, caduci; *pedunculus* iuxta basim facile abscissus. *Alabastra* fere sphærica, glabra, petalis imbricatis, inaperta 3-4 mm diametentia. *Sepala* libera, imbricata, oblonga, laxè ciliata, viridia; exteriora ad basim et secus dorso parum villosa, interiora dorso glabra, omnia intus glabra. *Corolla* tubulosa dolioliformis, usque  $6,0-6,5 \times 2,5-3,0$  mm, flavo virescens, extus glabra, intus pilis longis instructa; *petala* (pars libera) laxè ciliata, utrimque glabra, reflexa. *Discus* glandulis quinque ovoideis compositus, ca. 0,5 mm; glandulis supedunculatis, plane disjunctis, flavescentis. *Columna staminalis* ca. 4 mm, glabra, longitudinaliter striata. *Stamina* decem, biverticillata; verticillum inferum 3 mm supra basem situm, verticillum supremum 4 mm. *Antheræ* oblongæ,  $1,1-1,5 \times 0,5$  mm, flavæ, vix sagittatæ, dorsifixæ, introrsæ, vix exclusæ, petalas liberas paulo superantes; *connectivum* parum evolutum, aliquando excurrens apiculo efficiente.

FLORES FEMINEI. *Sepala* libera, imbricata, inæqualia,  $3-5 \times 1,5-2$  mm, oblongo triangularia, obtusa, extus intusque villis albis applicatis æque vestita. *Corolla* viride flavescens,  $4-6 \times 2-2,5$  mm, utricularis, extus glabra, intus ad medium laxè albo villosa, ad  $0,5-0,66$  sua longitudine connata (difficile in sicco observanda, usque ad basim in sicco fissa, fissuræ labia erosa); *tubus* plus minusve ventricosus, decemnervatus, quinque nervis alternis centralis, quinque commissuralis; *petala* (pars libera) ultra  $180^\circ$  recurvata, ciliata, intus extusque glabra. *Discus* glandulis quinque squamiformis liberis compositus; *glandulæ* oblongo rectangulares, apice emarginatæ. *Ovarium* fere sphæricum, glaberrimum, longitudinaliter sex costatum. *Styli* tres, 2,5 mm, glabri, in columna trisulcata ad 2 mm connati; *stigmata* bilobata, ca. 0,5 mm.

REGMA. *Pedunculus* valde elongatus, in fructo usque ad 6 cm. *Calyx* sub regma usque maturitate persistens, patens, sub regmate parum acrescens vel æquans. *Discus* squamis quinque glandulosis compositus, subtus regmata persistens, patens. *Pericarpium externum* coriaceum, extus parum undulatum figuræ pellis aureum mali, penitus glabrum, extus atratum, intus albidiusculum. *Pericarpium internum* atro coffeatum, magis carthagineus quam osseus. *Columella* 11-12 mm, triptera; sæpe fissa, ad basem et apicem

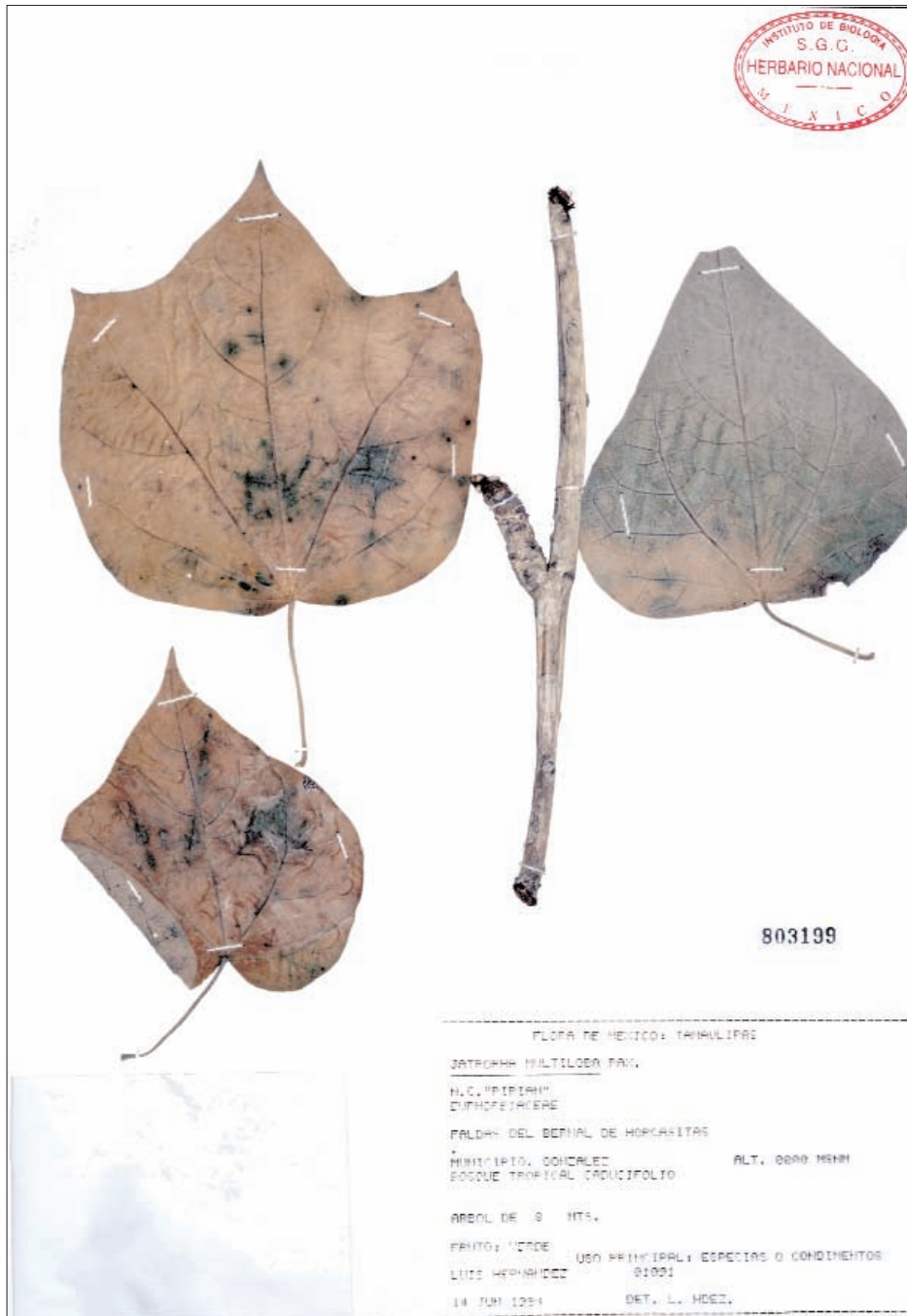


PLATE I. *Jatropha Sotoi-Nunyezii* Fernández Casas & Martínez Salas. Isotype: L. Hernández Sandoval 1091, 14-VI-1984 (MEXU 803199).



PLATE II. *Jatropha Sotoi-Nunyezii* Fernández Casas & Martínez Salas. Isotype: F. González Medrano 17725, 23-VII-1991 (MEXU 1045247).

fasciculis vascularibus tantum gerens; *apice* abrupte dilatato.

SEMINA illa subgenus *Adenoropii* similima. *Testa* castanea parum maculata vel fere immaculata, secus dorsum lætiore. *Demensa semina* 11, mm,  $\pm 0,1$ ; L:  $12,3 \pm 0,5$ ; l:  $7,7 \pm 0,25$ ; p:  $6,1 \pm 0,18$  [ $11,2 \times 7,5 \times 5,8$ ;  $11,9 \times 7,6 \times 6,1$ ;  $12,1 \times 7,2 \times 5,8$ ;  $12,1 \times 7,8 \times 6,2$ ;  $12,4 \times 7,9 \times 6,2$ ;  $12,5 \times 7,6 \times 6,1$ ;  $12,5 \times 7,8 \times 6,4$ ;  $12,6 \times 7,8 \times 6,1$ ;  $12,7 \times 8,0 \times 6,2$ ;  $12,8 \times 7,9 \times 6,1$ ;  $13,0 \times 8,1 \times 6,3$ ].

ENGLISH DESCRIPTION from holotype *E. M. Martínez Salas 40162* (MEXU s/n). This sample, collected in July, shows simultaneously flowers of both sexes and quite ripe fruits

*Short-shoots* almost cylindrical, ca.  $1 \times 0,5$  cm; sometimes there are stretching of lower internodes and the twigs are intermediate with the short-shoots.

LEAVES disposed throughout the present year twigs, or on short-shoots; *young leaf*s perfectly cordiform, hairy green above, villose whitish tessellate on the back; the *areoles* are defined upon lacking hair the nerves, contrarily what is observed in the adult leaves. *Petioles* until 6 cm, cylindrical, hirtu villosus. *Lamina* until  $13 \times 10,5$  cm, triangular cordate or subtrilobed, base truncate or cordate. *Radial (main) nerves* 3-5(-7), the two weak outermost do not reach the margin. *Secondary nerves*  $40-60^\circ$  forward, straight or curved, brochidodrome, very scarce in number, alternate and distant, hardly 1-2(-3) by each side. *Tertiary nerves* reticulate.

INFLORESCENCES apical and axillary, short, few flowered, composed dichasium few branching, pedunculate; at flowering hardly 1-2.5 cm long; *peduncle* at flowering 0.5 cm, white hirtous, lengthwise striate; *partial peduncles* outspread; it is frequent that only one feminine flower of each inflorescence reach to fructify, or that there is only alone. *Bracts* oblong lanceolate, white villosus on both sides, very like the sepals of pistillate flowers, but too little bigger, until  $6 \times 2$  mm, lightly canaliculate. *Bracteoles* like bracts but barely smaller; both gradually smaller along the inflorescence.

STAMINATE FLOWERS almost sessile, dropping off early; *peduncle* with an abscission line exactly on its base. *Flower buds* approximately spherical, glabrous, with imbricate petals, ca. 3-4 mm in diameter before opening. *Sepals* free, imbricate, oblong, loosely ciliate, greenish; the outermost with some hair in the base and in the back, the innermost with glabrous back, the all ones glabrous inside. *Corolla* tubular barrel-shaped, until  $6.0-6.5 \times 2.5-3.0$  mm, yellowish green, outside glabrous, with long flexuose hairs inside; *petals* (free part) loosely ciliate, on both sides glabrous, reflexed. *Disc* made up of five ovoid glands, ca. 0.5 mm each, subpedunculate, well separate to each other, yellowish. *Staminal column* ca. 4 mm, glabrous, lengthwise striate. *Stamens* ten, biver-ticillate, the first verticille 3 mm over the base, the second one 4 mm. *Anthers* oblong,  $1.1-1.5 \times 0.5$  mm, yellow, too little sagittate, dorsifixe, introrse, moderately excluded of corolla tube, hardly longer than the free petals; *connective* little developed, sometimes running out beyond anther making a not well defined short point (apiculum).

PISTILLATE FLOWERS. *Sepals* free imbricate, unequal in size,  $3-5 \times 1.5-2$  mm, oblong triangular, blunt, inside and outside dressed with homogeneous and applicate white down. *Corolla* yellowish green,  $4-6 \times 2-2.5$  mm, outside glabrous, inside, bladder-like, fused until 0.5-0.66 of its length (difficult to specifying, in dry is split almost until its base, but the lips are erose, not clean); *tube* too little swollen, inside at the middle loosely villosus, with ten nerves, five in the centre of each petal, another five commissural; the free part of the petals curved backwards more than  $180^\circ$ , ciliate, glabrous on both sides. *Disc* compound by five separated glands; *glandules* shaped like a scale, between oblong squared or rectangular, emarginate in the apex. *Ovary* approximately spherical, quite glabrous, lengthwise sex costate. *Styles* three 2.5 mm, glabrous, connate ca. 2 mm in column with three furrows; *stigma* bilobate, c. 0.5 mm.

REGMA. *Peduncle* notably lengthened at fruit time, reaching 6 cm. *Calyx* persists under fruit until its complete maturity, it is had patent; below the regma it hardly acrescent or unacrescent. *Disc* with patent scale-like glands remaining under of the regma. *External pericarp* leathery, with undulations like the skin of an orange, quite glabrous, dark outside and whitish inside. *Internal pericarp* dark coffee coloured, more carthilagineus than bony. *Columella* 11-12 mm, with three wings, frequently splitted in two parts only, vascular bundles only at apex and apex; apex jerkily broadened.

SEEDS very similar to those of subgenus *Adenoropium*. *Outer coat* enough uniform chestnut-coloured, almost unspotted, more lightly on the back. *Measured seeds* 11, mm  $\pm 0,1$ ; L:  $12,3 \pm 0,5$ ; l:  $7,7 \pm 0,25$ ; p:  $6,1 \pm 0,18$  [ $11,2 \times 7,5 \times 5,8$ ;  $11,9 \times 7,6 \times 6,1$ ;  $12,1 \times 7,2 \times 5,8$ ;  $12,1 \times 7,8 \times 6,2$ ;  $12,4 \times 7,9 \times 6,2$ ;  $12,5 \times 7,6 \times 6,1$ ;  $12,5 \times 7,8 \times 6,4$ ;  $12,6 \times 7,8 \times 6,1$ ;  $12,7 \times 8,0 \times 6,2$ ;  $12,8 \times 7,9$

× 6.1; 13.0 × 8.1 × 6.3].

**LATINA DESCRIPTIO** ex isotypo *J. González G. 22* (MEXU 144073)

**FOLIA.** *Stipulae* non vidimus, deficientes?; nisi ut pili axillares rubescentes stipulae essent; pili similes breviores atque pauciores inventi sunt adaxialiter in foliarum base, iuxta petioli insertionem. *Petiolus* usque 17 mm, cylindricus, acutus, cordatus, hirtus villosus, ad basim parum dilatatus. *Limbus* cordiformis, supra hirtus, subtus villosus, usque 60 × 54 mm. *Nervi radiales (principales)* quinque vel septem, tres vel quinque centrales fortiores, duo extimi debiliores; *nervus medius* margines attingens, reliqui non attingentes sed ante marginem nervis secundariis orienti; adaxialiter aequantes, abaxialiter prominentes; in foliis veteris, utraque pagina quam reliqua lamina villosiores. *Margo* absque quæpiam specialis proprietate, villo utraque pagina pectinatim disposito, albidiusculo, satis denso.

**REGMA.** *Pericarpium externum* coriaceum, vix rugosum, a pericarpio interno facile delapsum. *Pericarpium internum* cartilagineum, satis validum sed non ligneum, atro coffeatum vel nigricans; *rostrum (obturator)* firmius regmatis pars est, 2,7 mm. *Hemifolliculi* post aperturam atque semen destituti valde tortis; *callus* fere inconspicuus, ad basim parieto radialium dispositus.

**SEMINA** illis subgeneris *Adenoropii* similima. *Testa* variegata, coffeata vel castanea, atro maculata; *dorsum* modice convexum, tota longitudine vix carinatum; *apex* obtusus, subtus carunculae laciniis celatus; *carina ventralis* plana, e hilo usque ad umbonem sedis laete picta, vix ectypa; *pleurae* amplae, planae; *linea perimetralis maxima* diffusa, vix convexa; *sedes* convexa, umbonata. *Caruncula* ante hilum orta, supra apicem reflexa, laciniata, castanea; *apicibus* laciniarum albis. *Hilum* transverse obtriangulare, inter carinam ventralem et carunculam situm, modice magnum, ad 2 × 2,5 mm; *cicatrix* vascularis centralis ferruginosa pulverulenta area circumcincta recitata, testa destituta. *Demensa semina* tria, mm ± 0,1; L: 12,1 ± 0,32; l: 7,3 ± 0,29; p: 5,4 ± 0,40 [12,0 × 7,4 × 5,4; 12,1 × 7,5 × 5,4; 12,2 × 7,1 × 5,3].

**ENGLISH DESCRIPTION** fom isotypo *J. González G. 22* (MEXU 144073)

**LEAVES.** *Stipules* non-existent or at least not found, unless they will be such some locks of present reddish hair in the leaf axils; the same locks with hair less nourished and somewhat shorter return to appear on the adaxial lamina center, near the petiole insertion. *Petiole* until 17 mm, cylindric, hirtus villosus, with the mildly enlarged base. *Lamina* cordate, hirtous on the upper side, villosus by the back, acute, cordate, until 60 × 54 mm. *Radial (main) nerves* five or seven, the central three or five more stout, two more external less strong; the central reaches the lamina apex, the other are solved in secondary nerves before arriving to the margin; not prominent on the upper side, prominent on the back; in adult leaves, on both pages more densely hairy than the rest of the lamina. *Margin* without any special feature, the same hirtous down of both pages is had radiant forming a pectinate whitish series, quite dense.

**REGMA.** *External pericarp* leathery, moderately rugged, easily detachable of the inner pericarp. *Internal pericarp* cartilagineus, enough strong, but not so much that could be considered woody, obscure coffee color or almost dusky; the peak (plugging) is the only part that it can be considered stout, 2.7 mm. *Hemifollicles* very twisted after the seed expulsion, it develops a small *callus* on the radial wall, near the base, almost inconspicuous.

**SEEDS** very similar to those of subgenus *Adenoropium*. *Outer coat* variegated in brown tones and coffee, with a graininess somewhat more obscure. *Back* moderately convex, very gently carinate in all its length; *apex* obtuse, justly the extreme is hidden under the fringes of the caruncle. *Ventral keel* flat, hardly with projections but painted brightly coloured, it is extended from the hilum until the nipple of the seat. *Pleurae* large, flat. *Maximum perimetral line* diffuse, gently convex. *Seat* convex, with a nipple. *Caruncle* born above of the hilum and is extended back covering the apex; fringed, chestnut-colored and with white extremes of the the fringes. *Hilum* between the ventral keel and the caruncle, relatively large, c. 2 × 2.5 mm; the central spot with veins are surrounded by a powdery ferruginous bare area, skinned, devoid of the outer seed coat. *Measured seeds* 3, mm ± 0.1; L: 12.1 ± 0.32; l: 7.3 ± 0.29; p: 5.4 ± 0.40 [12.0 × 7.4 × 5.4; 12.1 × 7.5 × 5.4; 12.2 × 7.1 × 5.3].

**LATINA DESCRIPTIO** ex isotypo *G. Castillo Campos 2598* (XAL 57265)

**REGMA.** *Pericarpium externum* coriaceum, laxè venosum.

**SEMINA** illis subgeneris *Adenoropii* aliquo modo simillima. *Testa* homochroa, coffeata; *dorso* laetiore. *Demensum semen* unum, mm ± 0,1; L: 11,7; l: 6,8; p: 5,5.

**ENGLISH DESCRIPTION** from isotype *G. Castillo Campos 2598* (XAL 57265)

**REGMA.** *Internal pericarp* cartilagineus, loosely veined.



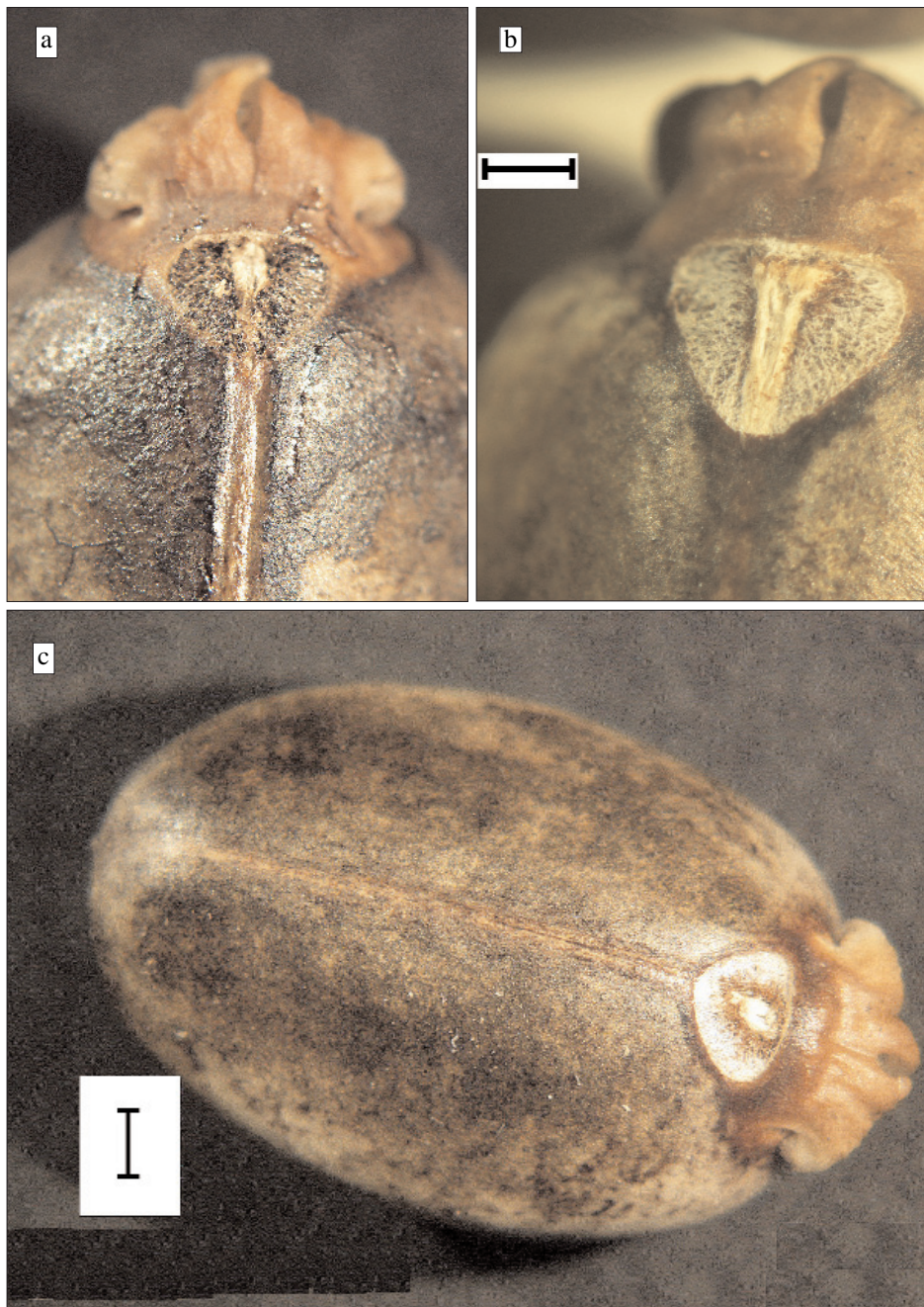


PLATE III. *Jatropha Sotoi-Nunyezii* Fernández Casas & Martínez Salas. Holotype: E. M. Martínez Salas 40162 (MEXU s/n). a, b) Hilum, skinned areole, caruncle and upper ventral keel. c) Seed, ventral view. Black stroke= 1 mm.

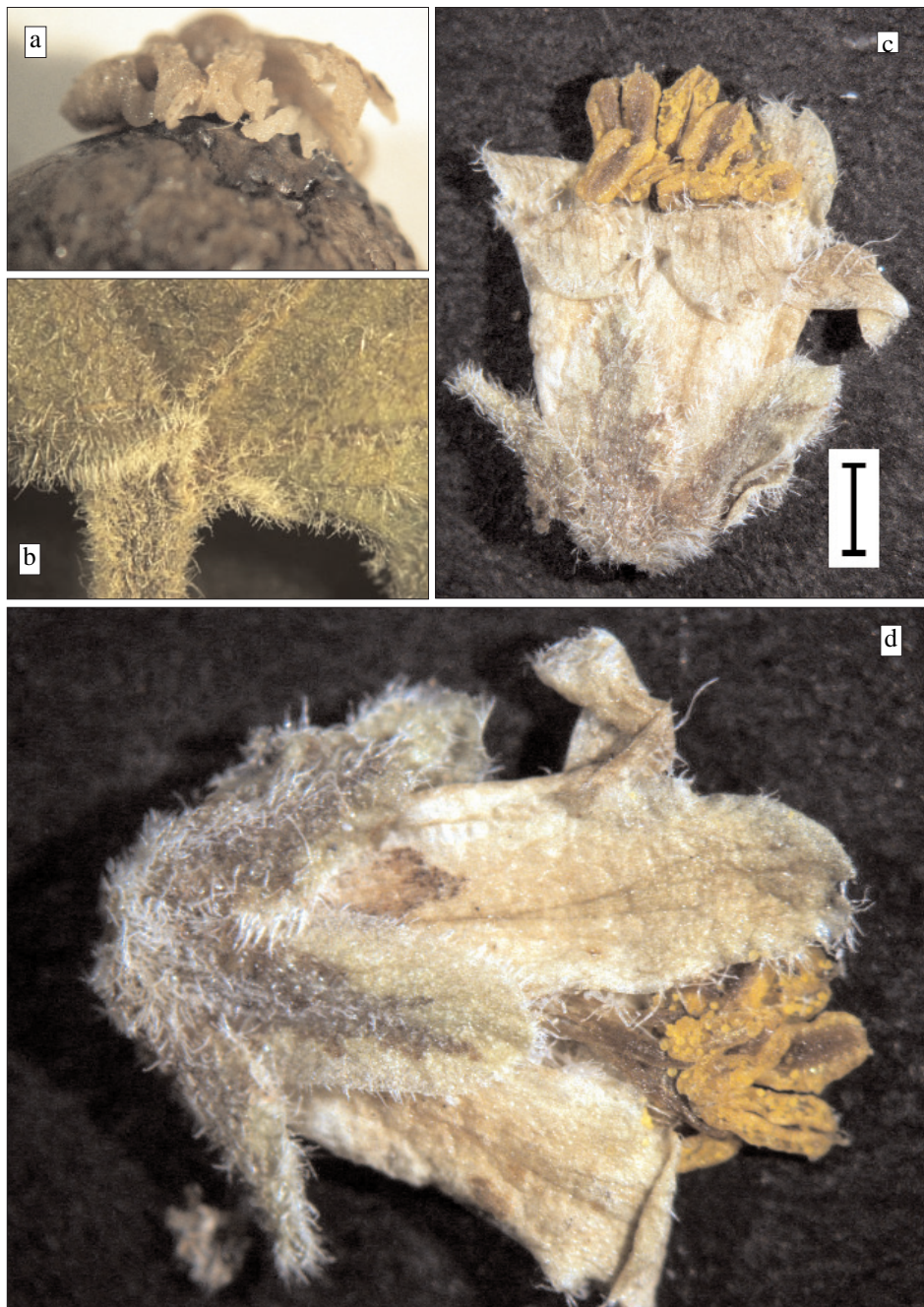


PLATE IV. *Jatropha Sotoi-Nunyezii* Fernández Casas & Martínez Salas. Holotype: E. M. Martínez Salas 40162 (MEXU s/n). a) Caruncle and apex, dorsal view. b) Lamina base of young leaf. c, d) Male ripe flower. Black stroke= 1 mm.

SEEDS very similar to those of subgenus *Adenoropium*. Outer coat coffee coloured. Measured seeds 1, mm  $\pm$  0.1; L: 11.7, l: 6.8, p: 5.5.

**REGARDING THE ETYMOLOGY** and orthoepy of the specific name

The specific name is devoted with admiration and respectfully to our distinguished colleague José Carmen SOTO NÚÑEZ, a relevant collector, studious and expert in the Mexican flora. The two words of the composed name are both paroxitone, the second and third vowels make diphthong: sótoi-nunyezii.

**OBSERVATIONS**

It resembles also *Jatropha Gaumeri* Greenman (1908). It differs because the inflorescences are hairy, and not quite glabrous; the fruits seem weaker, with the internal pericarp less consistent; the peculiar structure of the hilum is similar in both species.

It resembles to *Jatropha ciliata* Sessé in Cervantes (1805), specially by the form of some cordiform leaves, entire, not ciliate; but the inflorescence is shortly pedunculate and with fewer number of flowers.

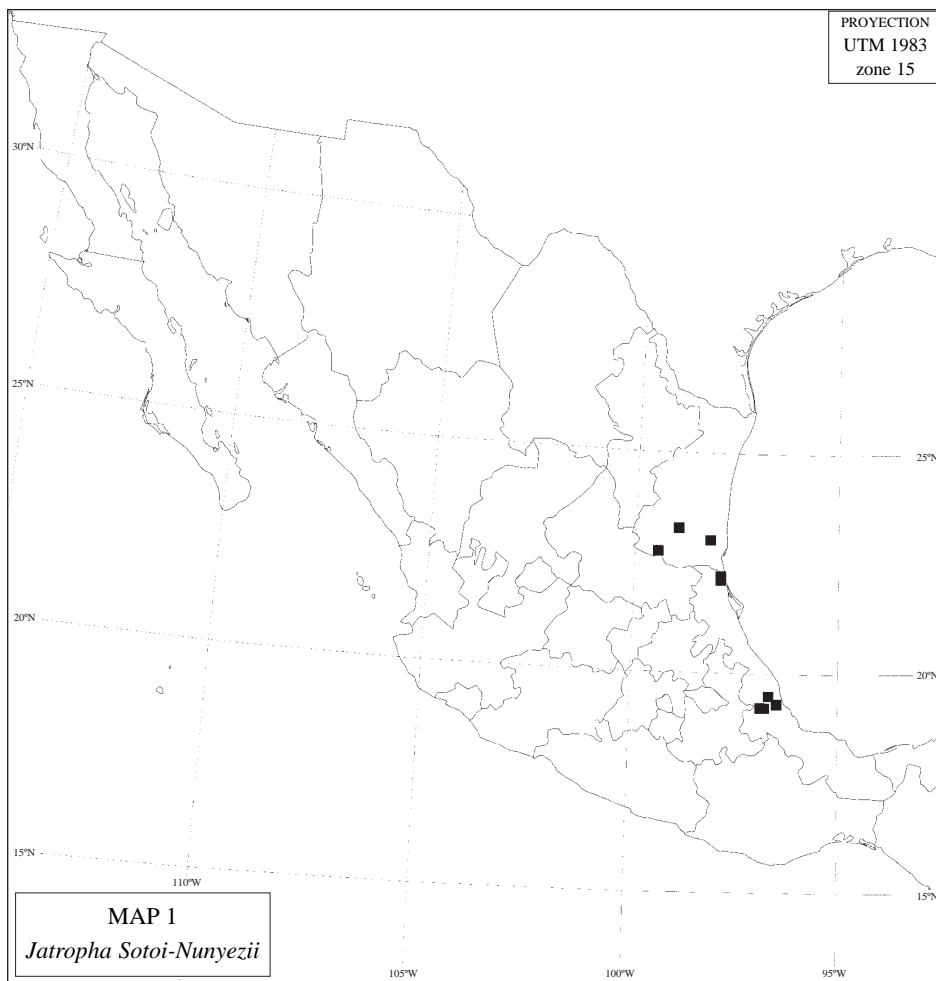
**EXAMINED SPECIMENS**

**MÉXICO, (28) TAMAULIPAS:**

- 14QNL07** 23.28°, -098.95°; Llera de Canales (atlas), 23°19'N, 099°00'W, «(munic. Llera de Canales) Calles: 21 km SW, Sierra de Tamaulipas, 400 m. Bosque espinoso. Hierba 1 m», *R. Jones 124*, 10-VI-1986 (ENCB s/n; MEXU 919712; MO 3649593).
- 14QPK14** 22.011°, -097.89°; Villa González, «(munic. Villa González) faldas del Bernal de Horcasitas. Bosque tropical caducifolio. Árbol 8 m; fruto verde. Uso como especia o condimento. "Pipián"», *L. Hernández Sandoval 1090*, 14-VI-1984 (MO 3649588).
- 14QPK14** Villa González, «(munic. Villa González) Bernal de Horcasitas: faldas. Bosque tropical caducifolio. Árbol 8 m; fruto verde. Se emplea como especia, condimento. "Pipián"», *L. Hernández Sandoval 1091*, 14-VI-1984 (MEXU 803199).
- 14QPK14** Villa González, «(munic. Villa González) Estación de Microondas Peña Bernal: ladera NE, 300 m. Selva baja caducifolia; suelos derivados de basalto. Árbol», *F. González Medrano 12622 & P. Hiriart Valencia*, 18-V-1982 (MEXU 555995). *Folia* tantum brachyblastis disposita sunt; *petioli* usque 60 mm; *limbi* usque 110  $\times$  90 mm.
- 14QML51** 22.74°, -099.44°; «El Pensil: 2,5 km N de Flores Magón, 22°45'N, 099°24'W, 380 m. Arbusto 3 m», *I. R. Trejo Vázquez 2293*, 22-VII-1992 (MEXU 1062128).
- 14QNL84** 23.02°, -098.17°; «(munic. Aldama) El Nacimiento: 3 km N, 23°00'28"N, 098°10'05"W, 230 m. Selva baja caducifolia con *Sapium*. Arbusto 2.5 m; látex translúcido; flores femeninas verdosas, flores masculinas blancas; frutos maduros e inmaduros», *E. M. Martínez Salas 40162*, 23-VI-2008 (MEXU s/n, holo-; typus *J. Sotoi-Nunyezii*).
- 14QNL84** «(munic. Aldama) ejido el Nacimiento (a unos 25 km de Aldama): 4,5 km NW, junto a la primera gruta, 150 m. Selva baja caducifolia, matorral derivado; suelo negro, rendzina; calizas aflorantes. Arbusto 1 m», *F. González Medrano 17725*, 23-VII-1991 (MEXU 1045247).
- 14QPK15** 22.20°, -097.89°; Tampico de Tamaulipas, 22°13'N, 097°51'W, «Sierra del Abra: zw. Valles  $\times$  Tampico, 200 m. Wald mit succulenten», *C. Troll 479*, 05-IV-1954 (M 79853).

**MÉXICO, (30) VERACRUZ-LLAVE:**

- 14QQG22** 19.22°, -096.86°; Zacualpán (ppl), 19°13'N, 096°53'W, «Zacuapán: barranca de Panoaya», *C. A. Purpus 8816*, IX (US 159993).
- 14QQG32** 19.22°, -096.76°; «Rancho la Palmilla: near. Rocky barranco», *C. A. Purpus 16167*, IV-1932 (C, loan 131/2005, n° 344).



**14QQG45** 19.49°, -096.67°; «(munic. Emiliano Zapata) entre Cerro Gordo y Plan del Río: 19°26'N, 096°39'W. Selva baja caducifolia, primaria; suelo arcilloso, rocoso. Arbusto 3 m; flores verdes; fruto verde», *G. Castillo Campos 2598 & J. L. Tapia*, 08-IV-1981 (XAL 57265). Tentative identification; without leaves, but with one quite ripe seed.

**14QQG63** 19.31°, -096.47°; «Puente Nacional: alrededores. Arbusto 2 m; fruto verde», *J. González González 22*, 26-VI-1970 (MEXU 144073).

#### ACKNOWLEDGEMENTS

To the curators and other responsible personnel of the herbaria C, ENCB, M, MEXU, MICH, MO, US, XAL, who lent us their material or facilitated our visits. Luis García-Bermejo Santos, of "Instituto de Bachillerato Bartolomé José Gallardo", in Campanario (Badajoz), helped us with efficiency in the Latin composition.

#### CITED LITERATURE

FERNÁNDEZ CASAS, F. J. (10-v-2008). *Jatropharum notulae (Euphorbiaceae)*, 4. *Fontqueria* 55(60): 465-468 [seorsim 1-4].